



IFMATM RVA
International Facility Management Association

February 2024

THE PRESIDENT'S MESSAGE...



Hello Everyone,

I was really happy to see all of you that braved the freezing temperatures to attend our event at SERVPRO last month. What a great start to 2024. They have an amazing array of machines that they use to respond to a disaster. Just the sheer number of dryers they have was astounding and the clean room smelled great! I hope everyone walked away from the tour with some additional knowledge on the process that goes into restoring after a major event.

As we turn the page to February, we will be hosting a tour of the new Genworth location. You will get a behind the scenes look at the work that has gone into creating their new Richmond Headquarters along with the intention behind the design. Check out our events page for more information and to sign up. We continue to work on lining up locations this year, but as always if you have an idea or there is a site you think would be of interest to the group please reach out to Sunny Hobbs or myself with those suggestions.

I look forward to seeing you at a future event and thank you for supporting IFMA RVA.

- Brian

UPCOMING MEETINGS



February 2024 Board Meeting

Date: Tuesday, February 6, 2024

Time: 4:30-6:00pm

Location: Trolley House or Virtual

February Membership Meeting

Date: Tuesday, February 13, 2023

Time: 5:30pm-7:30pm

Place: *Genworth*

11011 W. Broad Street, Glen Allen, VA
23060

Networking & Refreshments following at:
Capital Ale House across Broad St.

MEMBERSHIP CORNER

Zach Parker—Membership

NEW MEMBERS

Jessica Butterworth
Range Commercial Partners, Inc.
jbutterworth@rangecommercial.com

Kaylie McCarthy
Buckingham Greenery
kaylie@buckinghamgreenery.com

Greg Nachman
Range Commercial Partners, Inc.
gnachman@rangecommercial.com

Stephen Resinski
CP Rankin Inc.
sresinski@cprankin.com

Clay Swiger
Mid Atlantic Controls Corp.
cswiger@midatlanticcontrols.com

Andrew Treleaven
Smartwire LLC
andrew@smartwire360.com

Andrea Ward
Milliken
andrea.ward@milliken.com

Doug Wilberger
Range Commercial Partners, Inc.
dwilberger@rangecommercial.com

Todd Willett
Range Commercial Partners, Inc.
twillett@rangecommercial.com



***If you'd like to be more involved with IFMA RVA,
the Board is looking for help with Vice President &
the Newsletter for 2024.***

If interested, please reach out to

Adam Larsen at Adam.Larsen@allegion.com

2023-24 Board of Directors

OFFICERS

President

Brian Dudley, SFP, FMP
Brian.Dudley@Genworth.com

Vice President

Trent Dickson
Trent.dickson@bhegts.com

Secretary

Michael Calkins
michael@trolleyhouseva.com

Treasurer

Gretchen Hemmer, CFM
gretchenhemmer@gmail.com

Immediate Past President

Sunny Hobbs
sunnyh@ptsalesinc.com

CHAPTER ADMINISTRATORS

Administration

Adam Larsen
Adam.Larsen@allegion.com

COMMITTEE CHAIRS

Membership

Zach Parker
ZParker@FandR.com

Programs

Sunny Hobbs (Interim)
sunnyh@ptsalesinc.com
And
Twila Tyler
tyler@moii.com

Sponsorship

Brian Workman
BWorkman@MOII.com

Social Media/Web Site

Adam Larsen
Adam.Larsen@allegion.com

Newsletter

Beth Gay
beth@buckinghamgreenery.com

Hospitality

Karen Clifton
kclifton@servproctn.com

Professional Development

Maria O'Callaghan-Cassidy, MSOD,
CFM, SFP
mocallag@richmond.edu

Golf Tournament

Chad Bishop
cbishop@svmservices.net

Founding Member Advisor

Ranny Robertson, CFM, Retired
grjr41@gmail.com

MEMBERSHIP CORNER

continued

RENEWING MEMBERS

Danny Baldecchi
Atlantic Constructors
daniel.baldecchi@acibuilds.com

Mark Burlingham
nh2buck2@gmail.com

Anthony Corcoran
anthony.c.corcoran.cfm@gmail.com

Susan Dawson.
6894akip@gmail.com

Trent Dickson
BHE GT&S
trent.dickson@bhegts.com

Matthew Durden
Genworth
matthew.e.durdenjr@gmail.com

Kevin Fachetti
CBRE
kevinfachetti@gmail.com

Rod Hemphill
rhemphill@redleescs.com

Connie Hom
Buckingham Greenery
connie@buckinghamgreenery.com

Ira Long
URS
ira.long@amentum.com

Melissa Lounsbery
Enterprise Mobility
melissa.r.lounsbery@em.com

Jeff Newman
Interface
jeff.newman@interface.com

Gary Nowak
The Country Club of Virginia
gary.nowak@theccv.org

Maria O'Callaghan-Cassidy
University of Richmond
mocallag@richmond.edu

Zachary Parker
Froehling and Robertson
zparker@fandr.com

Jake Sentz
Kimball International
Jacob.Sentz@kimballinternational.com

Jeffrey Simon
City of Richmond—DPW Facilities Management Division
jeffrey.simon@richmondgov.com

Justin Taylor
Envirowash
jtaylor@envirowashinc.com

Trey Tingle
Virginia Alcoholic Beverage Control Authority
Tracy.tingle@virginiaabc.com

Dennis Walters
US Facilities
dennis.walters@usfacilities.com

Stuart Willis
TK Elevator
Stuart.willis@tkelevator.com

Danny Workman
Jefferson Hotel
danny.workman@jeffersonhotel.com

PROFESSIONAL MEMBERSHIP WINNERS FOR 2024

Mark Beatty
University of Richmond
mbeatty@richmond.edu

Lauren Frazier
Grace & Holy Trinity Church
lfrazier@ghtc.org

Meghan Johnston
University of Richmond
mmcloone@richmond.edu

Matt Long
University of Richmond
mlong#richmond.edu

Jason Wells
Westminster Canterbury
Richmond
jwells@wcrichmond.org



Professional Member Spotlight—Albert (Bert) Lunsford

Job Title and Company:

Corporate Facilities & Real Estate, Space Planning
Altria

How did you first become interested in Facility Management?

When I joined Philip Morris/Altria 26 years ago I started in the Operations Center in the mail-room/loading dock. From there I was promoted to the FM and space planning role.

What's one major challenge you've faced while working in FM and how did you overcome it? Being ultra-flexible and doing tasks without time to plan. I have adapted by keeping an open mind and being prepared for the unexpected. Also realizing the human factor is a major role in FM work.

What has been the most rewarding aspect of your job? Helping people and the company achieve our goals.

Are there any upcoming trends in FM that you are particularly interested in and why? The continued growth of artificial intelligence. I know this is part of the future, but we need to maintain the human connections and collaboration.

What advice would you give to someone new to FM or looking to get into the field? Be flexible, adaptive, and open to change. Change is a constant in the FM world.

From your perspective, what are the benefits of belonging to a professional community like IFMA? The local chapters, the IFMA resources, and networking locally and globally.





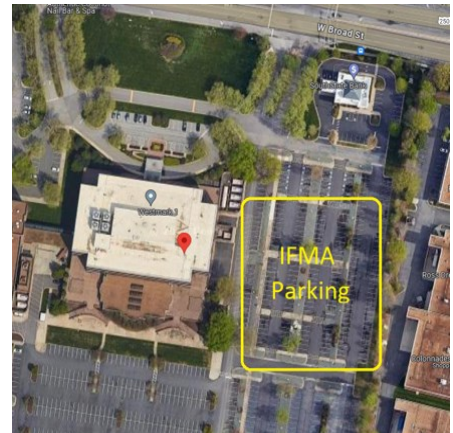
FEBRUARY MEMBERSHIP MEETING

WHEN: February 13th 5:30pm-7:30pm

LOCATION: Genworth 11011 W. Broad St.

Join us on Tuesday February 13th, as we tour **Genworth** to learn about their complete renovation and tenant upfit to the existing building, which includes the addition of an employee cafeteria, social room, clinic and health space, gym, locker room and creative collaborative spaces. **Baskervill**, the architect, and **Whiting Turner**, the general contractor, as well as other contractors and vendors will be on-hand to discuss the intention and development of the space.

We will begin the meeting at the Shipping/Receiving area on the East side of the building, where parking is available, and meet at Capital Ale House across the street for IFMA refreshments after the tours conclude. PLEASE NOTE: Google Maps may show the address incorrectly – BE SURE you are in Glen Allen, near intersection of W. Broad and Cox Road, next door to the Drury Plaza Hotel. Exit 178 B off 64 West.



Time: 5:30pm-7:30pm

RSVP by: Tuesday, February 13th. Registrations are recommended, may pay at the door.

RSVP at ifmarva.com through the events tab or on the main page

Cost*: Certified Members:
\$15
Members: \$25
Non-Members: \$50

* Registrations are encouraged prior to event.
*Credit card payments accepted at the door

Questions? Contact ifmarichva@gmail.com

**Thank you to our
Meeting Sponsors!**



SmartWire360
ENERGY EFFICIENT SOLUTIONS



DAVIS®



framery

Thank you to our 2024 Annual Chapter Sponsors!

PLATINUM SPONSOR



GOLD SPONSORS



SILVER SPONSORS





2024 PREPAID MEETING INVOICE

Pay now for every IFMA RVA meeting this year!

**CERTIFIED (CFM, SFP, FMP) PROFESSIONAL MEMBER:
\$240 PROFESSIONAL OR ASSOCIATE MEMBER: \$300**

NAME _____
COMPANY _____
PHONE NUMBER _____
E-MAIL ADDRESS _____

Remittance by Check:

IFMA RICHMOND CHAPTER
ATTN: Gretchen Hemmer, IFMA Treasurer
P.O. Box 808
Richmond, VA 23218

Credit Card Online Payment:

Certified Members (CFM, SFP, FMP): https://checkout.square.site/buy/M3V3Q3T3IKGMNUNRF5JG7_XND

Non-Certified Members: https://checkout.square.site/buy/TDNVC5UQADVQC2NRWIF6_M5VT

PREPAID DUES ARE NON-TRANSFERABLE



2024 BRONZE SPONSORSHIP FORM (MEMBERSHIP MEETING/CHAPTER EVENT SPONSORSHIP)

For \$300, the Sponsor Company will receive the following:

- Logo on Chapter website relative to meeting announcement
- Logo in Chapter newsletter (if received before deadline)
- Logo on meeting notice (if received before deadline)
- Logo displayed at meeting
- Two paid registrations to attend the meeting
- Marketing material displayed at meeting
- Opportunity to speak for 2 minutes at meeting

***** Please complete and return with company logo in a jpg file *****

Sponsor Information

corporate name: _____ date: _____

contact: _____ for month/event: _____

email: _____ phone: _____

Guest 1: _____ Guest 2: _____

Thank you for helping us empower facility management professionals in the Central Virginia! Please send company logo in adobe illustrator file (or image file if .ai not available) to Brian Workman, our Sponsorship Committee Chair, for publication. bworkman@moii.com



JANUARY MEMBERSHIP MEETING RECAP

WHEN: January 16th 5:30pm-8:30pm

LOCATION: Servpro Training Center, 12001
Deerhill Rd. Midlothian VA 23112

On Tuesday January 16th, we toured SERVPRO, and learned more about Disaster Relief.

With over 40 years' experience, this franchise is proud to show off their state of the art, Esporta and Fireline Restoration equipment. We viewed and learned about the vast amount and types of drying equipment owned and stored right here in Chesterfield County. Servpro had mitigation and reconstruction project managers on hand for any questions.





IFMATM Richmond Chapter
International Facility Management Association

IFMA ANNUAL SPONSORSHIP FORM

SILVER:

One Annual IFMA membership including dues
No cost entry for one member to attend every meeting this year
Golf tournament foursome sponsorship
One meeting sponsorship in a month of your choosing
One guest participant at the meeting you sponsor
Logo on Chapter website, Chapter newsletter, Meeting notices

GOLD:

All Silver benefits above plus the following
Two guests for all sponsored meetings
Three meeting sponsorships in the months of your choosing

PLATINUM:

All Silver/Gold benefits above plus the following
Two Annual IFMA memberships including dues
Six meeting sponsorships in the months of your choosing

SILVER: \$2,000

GOLD: \$2,500

PLATINUM: \$3,000

Company Name: _____

Contact Name: _____

Contact Email Address: _____

Phone Number: _____

Visit our website at ifmarva.com and look under the Professional Development tab to fill out a survey of interest for future certification classes.



Path Finding

IFMA's Professional Development

Your path to FM mastery is so clear it even comes with a roadmap. Follow the path to earn more professional recognition and relevance. Explore our Core Competency Courses and develop your expertise in a specific FM topic while enjoying total control of your learning journey.

▼ Skill Level/Course

▼ Eligibility & Requirements

<p>Master</p> 	<p>Who Experienced professionals who meet eligibility requirements</p> <p>What Demonstrate mastery of 11 competencies through knowledge and experience</p>
<p>Authority</p> 	<p>Who Facility professionals with a strong foundation of FM knowledge</p> <p>What Implement sustainable practices within any facility, regardless of age</p>
<p>Proficient</p> <p>IFMA's CORE Competencies</p>	<p>Who Facility professionals who want to round out their skills across the FM body of knowledge</p> <p>What Complete your understanding of all 11 core competencies of FM</p>
<p>Skilled</p> 	<p>Who Individuals seeking to gain knowledge of standards and best practice*</p> <p><small>*Typically FMP learners have at least one year of FM experience</small></p> <p>What Gain knowledge in four foundational competencies</p>
<p>Beginner</p> 	<p>Who New to FM or FM-adjacent role</p> <p>What Gain high-level understanding of the role of a facility manager</p>

ifma.org

Not sure where to start on the path to FM mastery? IFMA's Self-Assessment Tool helps you map your strengths across the FM body of knowledge and pinpoint your next training.

From our valued annual Platinum sponsor



AT SERVICEMASTER CLEAN THE EXPERIENCE MATTERS

At ServiceMaster Clean, we have the experience to service manufacturing facilities big and small, and with multiple locations. We work around your production schedules, production equipment, OEMs, warehousing, finished stock and high-tech controller equipment.

We can service your (front) office areas or the entire facility. Including cleaning outside the facility to handle needs such as removing crates, baling cardboard and other needs. We understand the importance of a clean facility to make a strong impression to your employees, clients and guests, and also to pass company inspections.

Our hard-surface floorcare services offer enhanced slip resistance, increasing safety for your employees and customers. We have state of the art products and equipment to fully clean all types of floors, including concrete, marble, vinyl, ceramic, quarry, tile, wood and more. Attractive, well-maintained floors can help enhance your professional image, while providing a clean, safe, work environment. We offer specialized products to handle unusual dirt or floorcare needs.

From our valued annual Gold sponsors

IMPLEMENT

[INTEGRATE]

INNOVATE

For more than 50 years, we have set the bar for clients who require consulting, construction, engineering and management services, combining science with the latest technology to devise solutions that stand the test of time. We break through barriers for our clients and help them follow through for sustainable results.



TRCcompanies.com

From our valued annual Gold sponsors



Cleaning. Restoration. Construction.
Richmond • Chesterfield • Henrico • Tri-Cities, Plus



COMMERCIAL LARGE LOSS DIVISION

NO JOB IS TOO LARGE

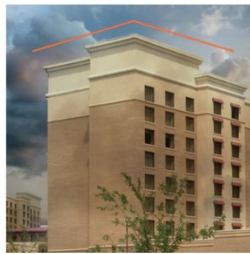
The SERVPRO® Commercial Large Loss Division is composed of our best of the best in restoration. Our elite large-loss specialists are prequalified and strategically positioned throughout the United States to handle any-size disaster. Every large loss is supervised by a commercial operations manager to help ensure seamless communication and timely mitigation.

The SERVPRO® Advantage is our ability to dispatch trained production professionals and cut costs through the strategic placement and oversight of temporary labor.

CLIENTS INCLUDE



Property Management



Hospitality Facilities



Education Facilities



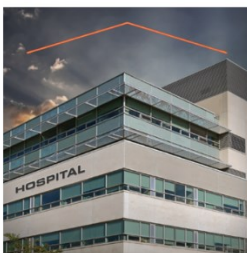
SERVPRO® has the resources to help you immediately.



SERVPRO® performs the necessary work to reduce further damage.



SERVPRO® works with you and your carrier to develop and approve a recovery plan designed to reduce business interruption.



Healthcare Facilities



Food Service Facilities



Retail Facilities

CALL US
TODAY

804-378-2323
OR VISIT OUR WEBSITE! SERVPROCHESTERFIELD.COM

MENTION
IFMA

From one of our valued annual Silver sponsors



ACI SERVICE

Uniquely Qualified for Your Business

ACI's factory trained technicians are uniquely qualified to keep all of your HVAC and plumbing equipment in top operating condition. **Backed by 60+ years of experience, our experts can customize your preventative maintenance plan to help lower costs and decrease downtime.**

In addition to providing 24/7 service, ACI Service can help you with:

- ▶ **Scheduled Quarterly Visits** to your site ensure continued efficiency. During these visits, we can perform the following and more:
Change filters | Change Belts | Clean Coils | Motor Optimization
- ▶ **Comprehensive Maintenance Plans** for all maintainable moving components including labor, materials and overtime. Some covered components include:
Compressors | Motors | Contactors | Relays | Bearings | Sheaves | Pulleys
- ▶ **Preventative Maintenance Plans** includes materials and labor cost for repairing worn or failed components. Examples of the equipment this can cover are:
**Boilers | Chillers | Air Handlers | Exhaust Fans | Bearings | Split Systems
Large or Small roof-top units | Backflows | VFD's | Water Fountains**

**To learn more, or if
you have questions
about ACI services,
contact us today!**

service@acibuilds.com

804.233.7676

www.acibuilds.com

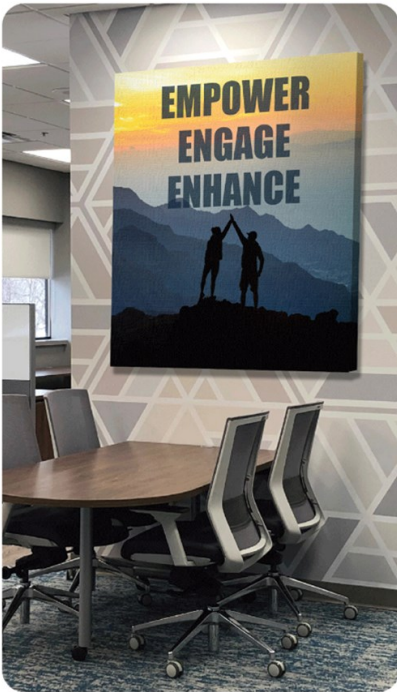
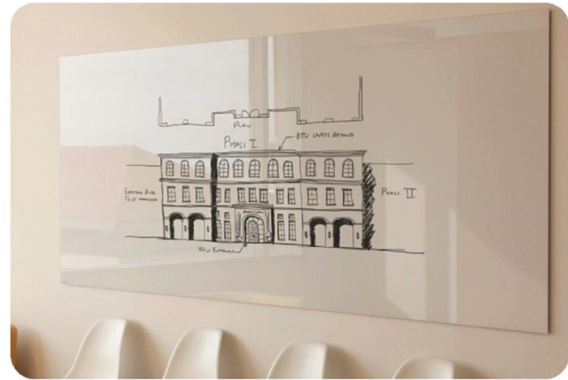


ACI
ATLANTIC CONSTRUCTORS

EXTRAORDINARY through Innovation, Collaboration, & Diversity

From our valued annual Silver sponsors

**Don't get out of your comfort zone,
simply upgrade it.**



FASTSIGNS
More than fast. More than signs.™

West End/Richmond	804-270-7446	13@fastsigns.com
Southside/Richmond	804-272-7446	27@fastsigns.com
Downtown/Richmond	804-644-7446	49@fastsigns.com
Fredericksburg	540-548-0028	375@fastsigns.com

From one of our valued annual Silver sponsors



Partnering to create intelligent spaces where people want to work, live, and stay.

MOI is a client-centered interior solutions provider that furnishes any space from floor to ceiling. We partner with our clients to transform their environment and enhance their culture.

As a 100% employee-owned company, MOI's staff measures our success alongside the success of our clients' projects. This has resulted in 95% of clients recommending MOI as their interior solutions partner.

With nearly 300 subject matter experts across seven offices and multiple distribution centers, our teams service clients across the Mid-Atlantic Region and beyond.

We partner with you from initial design vision to ordering product, delivery to installation, and move-in to post occupancy.

MOI earned the distinction of being named one of the Best Places to Work in Virginia for the past three years and was named the Largest Office Furniture Business by the Washington Business Journal.

Visit our website
www.moi.com



From one of our valued annual Silver sponsors



We Elevate... Richmond, Roanoke & Virginia Beach

Special offers for IFMA members

Area leadership

James Bailey

General Manager

202-302-1488

james.bailey@schindler.com

Richmond & Roanoke, VA

Sabrina Qreitem

Service Sales Representative

804-258-0532

sabrina.qreitem@schindler.com

Virginia Beach, VA

Christian Chavez

Service Project Manager

973-803-3898

christian.chavez@schindler.com



Schedule your free equipment evaluation today.* Call, email, or use the QR code to take advantage of a special offer to get a **MONTH OF SERVICE FREE.***

Schindler Elevator Corporation

www.schindler.com | [schindlerna](#) | [schindlerelevatorcorp](#) | [schindlerelevatorcorp](#)


*New service customers only. Limited to the Richmond, Roanoke & Virginia Beach, VA area. Offer valid for a limited time only and may be withdrawn at any time without notice. No cash value. Limit 1 evaluation per building. Certain exclusions, restrictions, taxes, and other fees may apply. Call 202.302.1488 for complete details.



We Elevate

Schindler

From one of our valued annual Silver sponsors



optimize the built environment

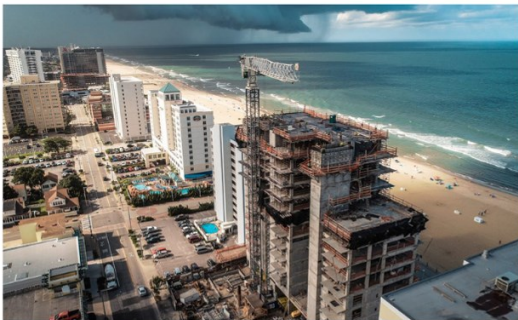
STRUCTR advisors offers consulting services for the construction and real estate industries. Led by construction industry veterans, our team aligns your business operations to strategic goals, laying the groundwork for optimal building solutions.

CONSULTING

Guiding and advocating for your project's success. Our analytical and innovative approach helps you achieve your goals - no matter the size or complexity of your project.

SUSTAINABILITY

Finding opportunities and implementing strategies for sustainable construction practices from early thinking to long-term operation.



AERIAL SERVICES

Expertise that moves your project forward while elevating it to new heights.

MECHANICAL ANALYSIS

Providing analysis of existing or proposed mechanical systems to increase operational efficiency and streamline costs.

VIRTUAL DESIGN & CONSTRUCTION

Exploring the what ifs surrounding your capital investment with advanced technology, bringing your vision to reality.



From our valued annual Silver sponsors



Trolley Hospitality Companies is a food and beverage company delivering exceptional service across Central Virginia for over 45 years. A leader in our industry, our brands deliver customized culinary experiences for all of our business and residential customers.

 <p>Complete Workplace Food and Beverage Provider</p> <p>At Trolley House Refreshments we help companies improve workplace culture by providing complete breakroom solutions. We have the micro market, pantry, coffee and water services that your employees have been waiting for.</p>	 <p>Expert Catering is More Than Food</p> <p>Specializing in corporate events, private events, and weddings, Groovin' Gourmets promises exceptional service from the moment you pick up the phone. Our diverse menus are designed to satisfy even the most discriminating palates.</p>	 <p>Corporate Dining Services with an Emphasis on Superior Food Service</p> <p>Trolley Eats is your complete corporate dining service. We specialize in corporate cafes, dining services, and can even provide your employees their next company cookout.</p>	 <p>Savor the Taste of the South</p> <p>Combining an appreciation of Richmond's history with a love of good food, drink, and conversation, Parterre is a quaint space with a relaxed atmosphere where our specialty is serving the comfort that comes with traditional southern cuisine.</p>
			

From one of our valued annual Silver sponsors



SERVICE

With professionals that are backed by an international network of engineers and experts, we are here to give you a fast turnaround for your elevator service. Expect lowered downtime with personal support from highly experienced-certified technicians and a 24/7 call center to meet your needs.



REPAIR

Ready to have prompt delivery for your spares and repairs? Don't wait around for parts to come in and get a higher availability thanks to quick troubleshooting. Our swift solutions are brought from local experts backed by a global network.



MODERNIZATION

Meet changing code requirements on your aging equipment and give your passengers an upgraded interior to match your building's aesthetic. Our extensive product portfolio guarantees the best option for your elevators.



CAPITAL PLANNING

Our capital planning offers you dedicated representatives who will provide you with the best recommendations for extending your elevator's lifespan. All consulting is customized for your building to see that your modernization fits your budget.

Contact the Richmond branch office at 1 804-355-9792

MOVE BEYOND