



## **THE NEW PRESIDENT'S MESSAGE...**

Dear IFMA RVA Members,

It is hard to believe that we threw out the 1st pitch at the Squirrels Game on June 10 marking the beginning of our chapters 25/26 fiscal year. Before the game, Austin Doherty talked to our group about the game day life of an FM and the Diamond. He also spent some time talking about the highlights of the new CarMax Park

being built next to the Diamond and scheduled to open for the next season. It was great seeing everyone at the Diamond and watching the game together. Hopefully we will continue the tradition at CarMax Park next year!

On May 2nd the board held its 2nd annual retreat at Genworth. The day was an incredible opportunity for the board to connect with one another and really focus on the growth and continued improvement of our chapter. We were able to set some incredible goals to include a membership drive, new member engagement, volunteer days, and more educational events. In addition, we will be offering more ways for members to get involved. If you have an interest in being on a committee for golf, programs, hospitality, or education, please reach out to one of our board members.

Our next Chapter event is scheduled for July 8th at The Wegmans Distribution Facility in Ashland. While onsite, we will be touring their newly built state-of-the-art warehouse to see how they distribute food through various departments and to their stores. We will also learn how the facility is set up to efficiently recycle air to maintain correct temperature requirements ensuring optimal conditions for different types of products. This is one event that you do not want to miss!

On August 20th we will hold our first chapter volunteer day since 2019. It will be from 9:00am to noon at the Richmond ToolBank. Make sure to sign up soon as spaces are limited. We are pleased to bring back volunteer days to support our community and those in need.

Finally, it is time to get your foursome signed up for our annual golf tournament which will be held at Lakeside Park Club on September 29th. As always, this will be an incredible tournament and fun for all.

See you at Wegmans!

Michael

## JULY MEMBERSHIP MEETING

**WHEN:** July 8<sup>th</sup> - 5:30pm

**LOCATION:** Wegmans

9300 Sliding Hill Rd

Ashland, VA 23005



### Join Us for a Tour of Wegmans

We invite you to join us for an exciting behind-the-scenes tour of Wegmans, a family-owned company that began in 1916 as a humble horse-and-carriage produce stand. During our visit, we'll explore the warehouse to see firsthand how Wegmans receives and distributes food through various departments, with insight into docking times and logistics for each area. While also learning how the facility efficiently recycles air to maintain the unique temperature requirements of each section, ensuring optimal conditions for different types of products.

In addition, we'll hear about Wegmans' collaboration with the Ukrop family during their entry into the Virginia market. We will also gain insight how employee cross-training across multiple roles has potentially influenced Wegmans a spot on *Fortune's* "100 Best Companies to Work For" list for an impressive 28 consecutive years.

#### Important Reminders:

Please wear closed-toe shoes and bring a coat, as part of the tour will take place in the freezer area.

**Time:** 5:30pm-7:30pm

**RSVP by:** Tuesday, July 8th. Registrations are recommended, may pay at the door.

RSVP at [ifmarva.com](http://ifmarva.com) through the events tab or on the main page

---

#### Cost\*:

Certified Members: \$20

Members: \$30

Non-Members: \$60

#### \*Registrations

are encouraged prior to event.

\*Credit card payments accepted at the door

Questions? Contact [ifmarichva@gmail.com](mailto:ifmarichva@gmail.com)

### Thank you to our 2025 Annual Chapter Sponsors!





**IFMA**<sup>®</sup> Richmond  
Chapter  
International Facility Management Association



**ANNUAL BUD VYE  
MEMORIAL**

**GOLF**

**TOURNAMENT**

**2025**

**REGISTRATION IS OPEN!**

**SEPTEMBER 29  
2025**

**BECOME A SPONSOR**

email [bworkman@moii.com](mailto:bworkman@moii.com)



**Lakeside Park Club**

[Sign Up Here!](#)





## 2025 PREPAID MEETING INVOICE

***Pay now for every IFMA RVA meeting this year!***

CERTIFIED (CFM, SFP, FMP) PROFESSIONAL MEMBER:  
\$300 PROFESSIONAL OR ASSOCIATE MEMBER: \$360

NAME COMPANY \_\_\_\_\_  
PHONE NUMBER \_\_\_\_\_  
E-MAIL ADDRESS \_\_\_\_\_

### Remittance by Check:

IFMA RICHMOND CHAPTER  
ATTN: Paul Lamborn, IFMA  
Treasurer P.O. Box 808  
Richmond, VA 23218

### Credit Card Online Payment:

Certified Members:

<https://checkout.square.site/buy/M3V3Q3T3IKGMNUNRF5JG7XND>

Non-Certified Members:

<https://checkout.square.site/buy/TDNVC5UQADVQC2NRWIF6M5VT>

\*PREPAID DUES ARE NON-TRANSFERABLE\*



# MEMBERSHIP CORNER

Zach Parker -- Membership

## NEW MEMBERS

Steve Burr  
Hope Church EPC  
[sburr@hopecentral.com](mailto:sburr@hopecentral.com)

Craig Kulas  
JMT  
[ckulas@aol.com](mailto:ckulas@aol.com)

Suzanne Popielec,  
CMCA, AMS, PCAM  
Goodman Management Group  
[suziep6886@gmail.com](mailto:suziep6886@gmail.com)

Ryan Saenz  
The Farley Center  
[ryanis1587@yahoo.com](mailto:ryanis1587@yahoo.com)

TMobile Care National Facilities  
Scott O'Brien  
[Scott.Obrien6@T-Mobile.com](mailto:Scott.Obrien6@T-Mobile.com)

Joshua Young  
[Joshua.Young101@T-Mobile.com](mailto:Joshua.Young101@T-Mobile.com)

Jovani Reyes  
MG Moving Services  
[Luis.Reyes77@T-Mobile.com](mailto:Luis.Reyes77@T-Mobile.com)

## RENEWING MEMBERS

Jesse Moon  
Virginia Green  
[jesse.moon@virginiagreen.com](mailto:jesse.moon@virginiagreen.com)

Troy Robertson  
Genworth  
[Troy.Robertson@genworth.com](mailto:Troy.Robertson@genworth.com)

Tunstall Flippen  
LandCare USA, LLC  
[tunstall.flippen@landcare.com](mailto:tunstall.flippen@landcare.com)

Nick Maiolo,, PMP  
YMCA of Greater Richmond  
[nick.maiolo64@gmail.com](mailto:nick.maiolo64@gmail.com)

Jeff D'Angelo  
Alliance Defending Freedom  
[jdangelo@adflegal.org](mailto:jdangelo@adflegal.org)

Virginia Department of Transportation  
Jeffrey Godfrey, FMP  
[Jeffrey.Godfrey@vdot.virginia.gov](mailto:Jeffrey.Godfrey@vdot.virginia.gov)

Matthew Fitzgerald  
[Matthew.fitzgerald@vdot.virginia.gov](mailto:Matthew.fitzgerald@vdot.virginia.gov)

Eric Estes  
University of Richmond  
[eestes@richmond.edu](mailto:eestes@richmond.edu)

Anthony Corcoran, CFM  
[anthony.c.corcoran.cfm@gmail.com](mailto:anthony.c.corcoran.cfm@gmail.com)

Mat Vance  
GardaWorld Security Services  
[mat.vance@garda.com](mailto:mat.vance@garda.com)

Adam Larsen  
Allegion  
[adam.larsen@allegion.com](mailto:adam.larsen@allegion.com)

Todd Branch  
Street & Branch, Inc.  
[todd@streetandbranch.com](mailto:todd@streetandbranch.com)

Lisa Hall  
Dunbar Security  
[lhall@dunbarsecurity.com](mailto:lhall@dunbarsecurity.com)

## 2024-25 Board of Directors

### OFFICERS

#### President

Michael Calkins  
[michael@trolleyhouseva.com](mailto:michael@trolleyhouseva.com)

#### Vice President

Raina Nitsch  
[raina.nitsch@kinsaleins.com](mailto:raina.nitsch@kinsaleins.com)

#### Secretary

Jessica Butterworth  
[jbutterworth@rangecommercial.com](mailto:jbutterworth@rangecommercial.com)

#### Treasurer

Paul Lamborn  
[plamborn@techpainting.com.com](mailto:plamborn@techpainting.com.com)

#### Immediate Past President

Brian Dudley, SFP, FMP  
[Brian.Dudley@Genworth.com](mailto:Brian.Dudley@Genworth.com)

### CHAPTER ADMINISTRATION

#### Administrator

Adam Larsen  
[Adam.Larsen@allegion.com](mailto:Adam.Larsen@allegion.com)

#### COMMITTEE CHAIRS

##### Membership

Zach Parker  
[ZParker@FandR.com](mailto:ZParker@FandR.com)

##### Programs

Daniel Furth  
[dfurth@odmva.com](mailto:dfurth@odmva.com)  
and  
Twila Tyler  
[tyler@moii.com](mailto:tyler@moii.com)

##### Sponsorship

Brian Workman  
[BWorkman@MOII.com](mailto:BWorkman@MOII.com)

##### Communications

Andrew Treleaven  
[Andrew@smartwire360.com](mailto:Andrew@smartwire360.com)  
and  
Lynette Brinkerhoff  
[lynette.b@managemowed.com](mailto:lynette.b@managemowed.com)

##### Hospitality

Karen Clifton  
[kclifton@servproctn.com](mailto:kclifton@servproctn.com)

##### Education

Matt Durden  
[matthew.durden@genworth.com](mailto:matthew.durden@genworth.com)

##### Golf Tournament

Chad Bishop  
[cbishop@svmservices.net](mailto:cbishop@svmservices.net)

##### Founding Member Advisor

Ranny Robertson, CFM, Retired  
[grrjr41@gmail.com](mailto:grrjr41@gmail.com)



**IFMA® Richmond Chapter**  
International Facility Management Association

## MAY MEETING RECAP

**WHEN:** Tuesday May 13th  
**TIME:** 5:30pm - 7:30pm  
**LOCATION:** Truck Enterprises -  
Kenworth Sales Company  
10036 Sliding Hill Road,  
Ashland, VA 23005



Our recent IFMA regional chapter event was a great success! We kicked off the evening by voting in our new officers for the year—congratulations to all those stepping into leadership roles. We're excited for what's ahead!

Following the vote, attendees toured Kenworth's brand-new, 80,000 square foot truck facility—an impressive, state-of-the-art space designed with a strong emphasis on technician well-being. The facility showcases a commitment to a clean, safe, and comfortable work environment, with standout features including a smart refrigerant system that allows for temperature customization in different areas, and massive air circulation fans that ensure an emission-free atmosphere.

Highlights of the tour included their industrial-scale pressurized cleaner for engine blocks and transmissions, and the enormous paint booth—large enough to accommodate a full-sized big rig!

Special thanks to Tucker Morgan of Kenworth and Leon Darnell of ODM for hosting us. This was truly a remarkable facility and a fantastic behind-the-scenes look at modern fleet operations.

We wrapped up the evening with great food, drinks, and networking at Kreggers.

**Thank you again to ODM for generously sponsoring this event!**

---

**Thank you to our 2024 Annual Chapter Sponsors!**









## **Job Title and Company**

Jessica Butterworth  
Managing Director of Asset Services  
Range Commercial Partners, Inc.



## **How did you first become interested in Facility Management?**

By a twist of fate, a friend mentioned that CBRE was hiring just as I was exploring new career opportunities—and that is how I was introduced to commercial property management. From that initial moment, I was hooked. I've since gained invaluable experience and can't imagine pursuing any other career path. Throughout my journey, I've had the opportunity to manage a diverse portfolio of properties, including office spaces, medical facilities, large estates, and government-leased buildings. I've also had the privilege of working alongside exceptional engineering and maintenance teams, collaborating to ensure client satisfaction, optimize staffing, coordinate training, and implement technology solutions that support operations in the field.



## **What's one major challenge you've faced while working in FM and how did you overcome it?**

A common challenge we face in this industry is staying informed - not only about new building technologies, but also about aging systems still in operation. Managing a portfolio of properties that span different eras means understanding a variety of mechanical, lighting, and plumbing systems. Throughout my career, I have been fortunate enough to work with knowledgeable colleagues and vendors who have helped me understand these systems. Their assistance has allowed me to better support clients and guide them in making well-informed decisions for their assets.

## **What has been the most rewarding aspect of your job?**

It's hard to choose just one aspect, because I find so much of what I do truly rewarding. There's a deep sense of satisfaction in solving building issues for tenants and clients or navigating complex financials to stay on—or even under—budget. But what I find most fulfilling is building strong, cohesive teams. There's something incredibly powerful about bringing together individuals with complementary strengths and seeing them collaborate to tackle challenges. Watching those teams grow, support one another, and succeed together is, without a doubt, the most rewarding part of my role.

**Are there any upcoming trends in FM that you are particularly interested in and why?**

AI, is at the top of mind for many right now. How can this technology be used safely, responsibly, and effectively to support field operations and enhance our roles? While there is much more to learn, it can add value through tools like predictive maintenance, smart building automation, and optimized work order prioritization.

**What advice would you give to someone new to FM or looking to get into the field?**

Go for it! And when you do, sign up for every bit of training, mentorships, and hands-on experience you can get. Learn everything—from how different buildings function, to how the occupants within them operate, to the wide range of mechanical systems and day-to-day building operations. This role can be challenging at times. There will be moments when systems fail, or when nothing seems to run quite right—but don't let that discourage you. Those tough days are part of what makes the wins so rewarding. It's a career that's not only dynamic and complex, but incredibly rewarding for those who stick with it.

**From your perspective, what are the benefits of belonging to a professional community like IFMA?**

IFMA has expanded my education of building operations - largely through the opportunity to tour such a variety of facilities. Also, IFMA has allowed me to build connections with other managers and trusted vendors. Knowing the people in your network, not just by name, but face to face makes a difference when support or service is needed.



**IFMA<sup>®</sup> Richmond Chapter**  
International Facility Management Association

---

**If you'd like the opportunity to showcase your company during an event by becoming a meeting Bronze Sponsor, please reach out to:**

**Brian Workman at  
bworkman@moii.com**

---

*Thank you to our 2025 / 2026 Annual Chapter Sponsors!*

PLATINUM SPONSOR



GOLD SPONSORS



SILVER SPONSORS







## 2025 BRONZE SPONSORSHIP FORM (MEMBERSHIP MEETING/CHAPTER EVENT SPONSORSHIP)

**For \$400, the Sponsor Company will receive the following:**

- Logo on Chapter website relative to meeting announcement
- Logo in Chapter newsletter (if received before deadline)
- Logo on meeting notice (if received before deadline)
- Logo displayed at meeting
- Two paid registrations to attend the meeting
- Marketing material displayed at meeting
- Opportunity to speak for 2 minutes at meeting

**\*\*\*\*\* Please complete and return with company logo in a jpg file \*\*\*\*\***

### **Sponsor Information**

**corporate name:** \_\_\_\_\_ **date:** \_\_\_\_\_

**contact:**\_\_\_\_\_ **for month/event:**\_\_\_\_\_

**email:**\_\_\_\_\_ **phone:**\_\_\_\_\_

**Guest 1:**\_\_\_\_\_ **Guest 2:**\_\_\_\_\_

Thank you for helping us empower facility management professionals in the Central Virginia! Please send company logo in adobe illustrator file (or image file if .ai not available) to Brian Workman, our Sponsorship Committee Chair, for publication. [bworkman@moii.com](mailto:bworkman@moii.com)



## **IFMA ANNUAL SPONSORSHIP FORM**

### **SILVER:**

- One Annual IFMA membership including dues
- No cost entry for one member to attend every meeting this year
- Golf tournament foursome sponsorship
- One meeting sponsorship in a month of your choosing
- One guest participant at the meeting you sponsor
- Logo on Chapter website, Chapter newsletter, Meeting notices

### **GOLD:**

- All Silver benefits above plus the following
- Two guests for all sponsored meetings
- Three meeting sponsorships in the months of your choosing

### **PLATINUM:**

- All Silver/Gold benefits above plus the following
- Two Annual IFMA memberships including dues
- Six meeting sponsorships in the months of your choosing

**SILVER: \$2,300 GOLD: \$2,800 PLATINUM: \$3,400**

**Company Name:** \_\_\_\_\_

**Contact Name:** \_\_\_\_\_

**Contact Email Address:** \_\_\_\_\_

**Phone Number:** \_\_\_\_\_

From our valued annual Platinum sponsor



## AT SERVICEMASTER CLEAN THE EXPERIENCE MATTERS

At ServiceMaster Clean, we have the experience to service manufacturing facilities big and small, and with multiple locations. We work around your production schedules, production equipment, OEMs, warehousing, finished stock and high-tech controller equipment.

We can service your (front) office areas or the entire facility. Including cleaning outside the facility to handle needs such as removing crates, baling cardboard and other needs. We understand the importance of a clean facility to make a strong impression to your employees, clients and guests, and also to pass company inspections.

Our hard-surface floorcare services offer enhanced slip resistance, increasing safety for your employees and customers. We have state of the art products and equipment to fully clean all types of floors, including concrete, marble, vinyl, ceramic, quarry, tile, wood and more. Attractive, well-maintained floors can help enhance your professional image, while providing a clean, safe, work environment. We offer specialized products to handle unusual dirt or floorcare needs.

---



From one of our valued annual Gold sponsors:



Cleaning. Restoration. Construction.  
Richmond • Chesterfield • Henrico • Tri-Cities, Plus



## COMMERCIAL LARGE LOSS DIVISION

NO JOB IS TOO LARGE

The SERVPRO® Commercial Large Loss Division is composed of our best of the best in restoration. Our elite large-loss specialists are prequalified and strategically positioned throughout the United States to handle any-size disaster. Every large loss is supervised by a commercial operations manager to help ensure seamless communication and timely mitigation.

The SERVPRO® Advantage is our ability to dispatch trained production professionals and cut costs through the strategic placement and oversight of temporary labor.

### CLIENTS INCLUDE



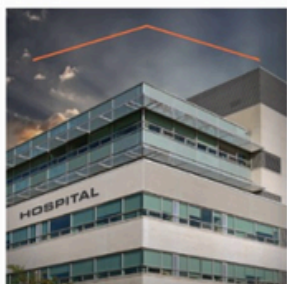
Property Management



Hospitality Facilities



Education Facilities



Healthcare Facilities



Food Service Facilities



Retail Facilities



SERVPRO® has the resources to help you immediately.



SERVPRO® performs the necessary work to reduce further damage.



SERVPRO® works with you and your carrier to develop and approve a recovery plan designed to reduce business interruption.

CALL US  
TODAY

**804-378-2323**

OR VISIT OUR WEBSITE! [SERVPROCHESTERFIELD.COM](http://SERVPROCHESTERFIELD.COM)

MENTION  
IFMA



From one of our valued annual Gold sponsors:



WT

WHITING-TURNER

proudly supports

INFdth

to advance our collective knowledge  
value and growth for FM professionals

[www.whiting-turner.com](http://www.whiting-turner.com)

Construction Management | General Contracting | Design-Build | Integrated Project Delivery



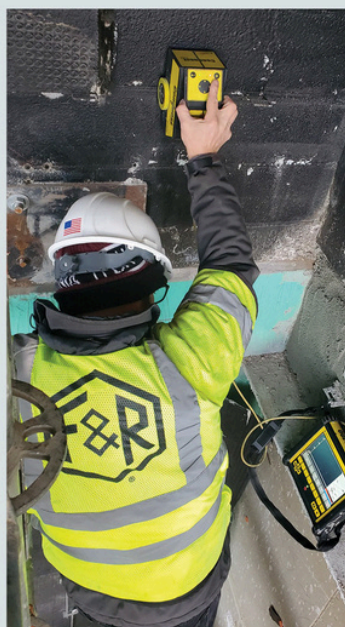
# From one of our valued annual Silver sponsors:

ENVIRONMENTAL CONSULTING | GEOTECHNICAL ENGINEERING | CONSTRUCTION MATERIALS TESTING



**FROEHLING &  
ROBERTSON**

**PROUD TO SERVE THE FACILITIES  
MANAGEMENT MARKET**



From the air you breathe to the ground beneath your feet, F&R's results-oriented professional consulting engineers and environmental scientists are dedicated to protecting people and property.

F&R provides a range of valuable services to the facilities management industry that optimize building performance, reduce operating costs, and ensure regulatory compliance:



## ENVIRONMENTAL CONSULTING

- Pre-Renovation Hazmat Inspections (Asbestos, Lead, PCBs)
- Mold Consulting
- Indoor Air Quality Testing
- Petroleum Underground Storage Tank Assessment
- Vapor Intrusion Testing
- Radon Testing



## GEOTECHNICAL ENGINEERING

- Subgrade Evaluations
- Slope Stability Analysis
- Groundwater Assessments
- Forensic Investigation Support
- Expansion Consultation



## CONSTRUCTION MATERIALS TESTING

- 3rd Party Special Inspections/ Code Compliance
- Document Condition of Existing Structures
- Preventive Maintenance Inspections
- Specialized Testing Services, such as Non-Destructive Testing (NDT)
- Forensic Materials Sampling & Testing

## CONTACT US



Zachary C. Parker, PMP  
Director of Environmental Services



804.591.2767



ZParker@FandR.com



www.fandr.com



From one of our valued annual Silver sponsors:



We are excited to offer our customers **Anticimex SMART**, an intelligent rodent control system with around-the-clock monitoring and support.



**Benjamin Conaway**  
(202) 313-2612

[ben.conaway@americanpest.net](mailto:ben.conaway@americanpest.net)



MOSQUITOES



TICKS



ANTS



RODENTS



OVER 30 MORE



## We Make Your Business Pest Proof

We know that pests in offices and in the workplace limit productivity and reduce profits. Scan QR code to learn more!

From one of our valued annual Silver sponsors:



## MG | Commercial Services

MG Moving Services is an award-winning, full service moving and storage corporation with over a hundred moving professionals, a fleet of over thirty trucks, and two warehousing & distribution facilities available for use.

MG Moving Services provides office relocation, transportation, logistics & asset management services to facilities of all sizes, from small privately-held businesses to Fortune 500 companies and government locations, such as Fort Belvoir and Walter Reed Army Medical Center.

Locally-owned and headquartered in Sterling, Virginia, MG Moving Services is a highly recognized name, known and trusted for providing a wide scope of dependable relocation services throughout the DC Metro area. The company's extensively trained professionals, detailed processes & business systems have helped organizations complete over 100,000 successful relocations.



### Project Management

- Project Planning & Design
- Move Management
- Office Decommissioning
- Modular Furniture Systems - Installation, Reconfiguration & Removal
- Furniture, Fixtures & Equipment (FF&E)



### Commercial Services

- Office Moves - Internal, Local & Long Distance
- Moves, Adds & Changes (MAC)
- Commercial Storage
- Cubicle-Disassembly / Assembly
- Operating Supplies & Equipment (OS&E)



### Technology Services

- IT Disconnect / Reconnect Services
- Server Relocations / Network 'Rack & Stack'
- Data Center Migrations
- Electronics Removal & Recycling
- Hard Drive Shredding / Data Destruction
- Cable Abatement & Removal



### Warehousing / Logistics

- Receiving / Distribution
- Inventory Control
- Freight Forwarding & Management
- Record Retention & Archival Services
- Document Shredding



**Highly Professional.  
Extraordinary Service.  
Thousands of Successful  
Moves. Minimize Business  
Disruption with MG Moving  
Services.**



### Permits & Licenses

- ✓ Local for Hire Permit #4186
- ✓ Intrastate Certificate #614
- ✓ Interstate MC #848140
- ✓ USDOT #2455961



### Credentials & Associations

- ✓ International Office Moving Institute (IOMI)
- ✓ American Trucking Associations (ATA)
- ✓ A-Rated Accredited BBB Member
- ✓ Claims Prevention & Procedure Council (CPPC)
- ✓ Virginia Movers & Warehousemen Association



From one of our valued annual Silver sponsors:



MOI partners with you to create intelligent spaces where people want to work, live, and stay.



1983

MOI WAS FOUNDED  
75+

VIRGINIA-BASED  
EMPLOYEE-OWNERS  
**MillerKnoll**

TOP 3 DEALER IN THE  
COUNTRY BY VOLUME

MOI is a client-centered interior solutions provider that furnishes any space from floor to ceiling. We partner with our clients to transform their environment and enhance their culture.

As a 100% employee-owned company, MOI's staff measures our success alongside the success of our clients' projects. This has resulted in 95% of clients recommending MOI as their interior solutions partner.

We partner with you from initial design vision to ordering product, delivery to installation, and move-in to post occupancy.



Connect with Brian Workman  
Project Director in Richmond  
[bworkman@moii.com](mailto:bworkman@moii.com)  
[www.moii.com](http://www.moii.com)



From one of our valued annual Silver sponsors:



# Embrace the Shift

---

For more than 50 years, we have set the bar for clients who require consulting, construction, engineering and management services, combining science with the latest technology to devise solutions that stand the test of time. We break through barriers for our clients and help them follow through for sustainable results.



From one of our valued annual Silver sponsors:



The **Experts** Since 1987

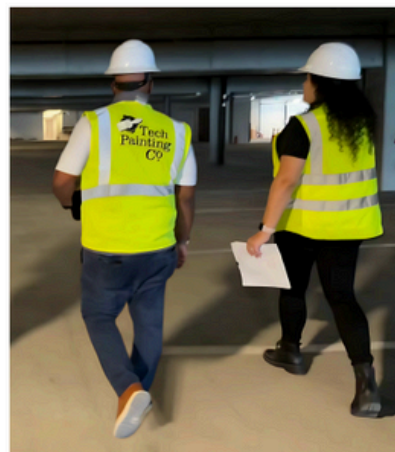
## All of your **needs** in one place.

With nearly 40 years of experience, Tech Painting delivers high-performance solutions for commercial and industrial spaces.

We ensure minimal disruption, lasting durability, and compliance with industry standards.

### SOME OF OUR **EXPERTISE**

- Interior & Exterior Painting
- Drywall & Plaster Repair
- Wallcovering Installation & Removal
- Parking Lot Striping
- After Hours Services
- Wall Protection Installation
- Epoxy Floor Coatings
- Painted Graphics & Wayfinding



From office buildings to warehouses, our team enhances aesthetics, safety, and asset protection.





From one of our valued annual Silver sponsors:



## Our Services:

- ✓ Carpet Tile
- ✓ Resilient Tile and Sheet
- ✓ Ceramic and Porcelain Tile
- ✓ Wood
- ✓ Fitness Flooring
- ✓ Epoxy and Sealed Concrete
- ✓ Healthcare Flooring / Containment
- ✓ Service Repairs and Maintenance

[www.specifiedtile.com](http://www.specifiedtile.com)

**Contact Us**

 Josh Hodges  (804) 512-3385  
 [josh@specifiedtile.com](mailto:josh@specifiedtile.com)



From one of our valued annual Silver sponsors:



# ACI SERVICE

Uniquely Qualified for Your Business

ACI's factory trained technicians are uniquely qualified to keep all of your HVAC and plumbing equipment in top operating condition. **Backed by 60+ years of experience, our experts can customize your preventative maintenance plan to help lower costs and decrease downtime.**

## In addition to providing 24/7 service, ACI Service can help you with:

- ▶ **Scheduled Quarterly Visits** to your site ensure continued efficiency. During these visits, we can perform the following and more:  
**Change filters | Change Belts | Clean Coils | Motor Optimization**
- ▶ **Comprehensive Maintenance Plans** for all maintainable moving components including labor, materials and overtime. Some covered components include:  
**Compressors | Motors | Contactors | Relays | Bearings | Sheaves | Pulleys**
- ▶ **Preventative Maintenance Plans** includes materials and labor cost for repairing worn or failed components. Examples of the equipment this can cover are:  
**Boilers | Chillers | Air Handlers | Exhaust Fans | Bearings | Split Systems**  
**Large or Small roof-top units | Backflows | VFD's | Water Fountains**

To learn more, or if you have questions about ACI services, contact us today!

[service@acibuilds.com](mailto:service@acibuilds.com)

804.233.7676

[www.acibuilds.com](http://www.acibuilds.com)



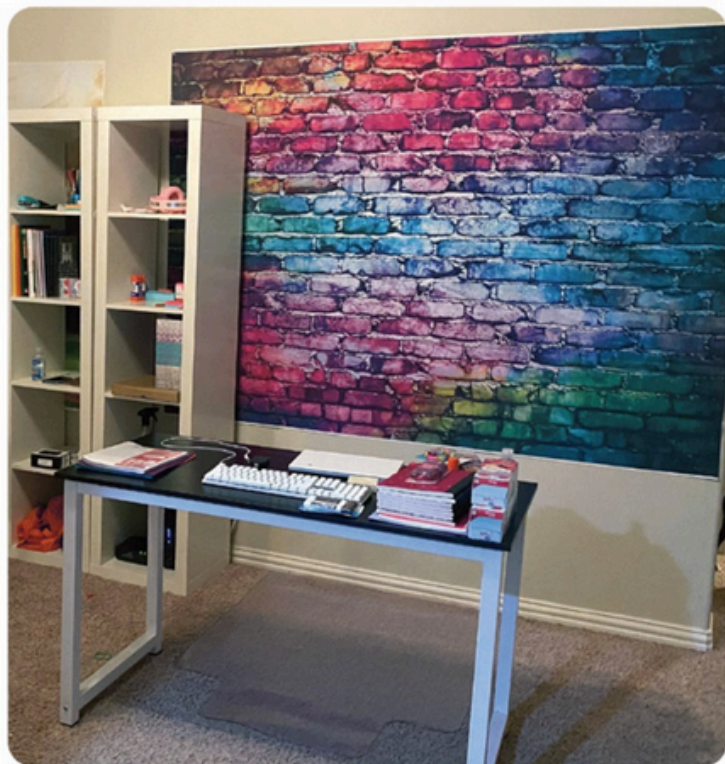
**ACI**  
ATLANTIC CONSTRUCTORS

EXTRAORDINARY through Innovation, Collaboration, & Diversity



From one of our valued annual Silver sponsors:

Don't get out of your comfort zone,  
simply upgrade it.



**FASTSIGNS**  
More than fast. More than signs.™

West End/Richmond	804-270-7446	13@fastsigns.com
Southside/Richmond	804-272-7446	27@fastsigns.com
Downtown/Richmond	804-644-7446	49@fastsigns.com
Fredericksburg	540-548-0028	375@fastsigns.com



From one of our valued annual Silver sponsors:



## We Elevate... Richmond, Roanoke & Virginia Beach

Special offers for IFMA members

**Area leadership**

**James Bailey**

General Manager

202-302-1488

james.bailey@schindler.com

**Richmond & Roanoke, VA**

**Sabrina Qreitem**

Service Sales Representative

804-258-0532

sabrina.qreitem@schindler.com

**Virginia Beach, VA**

**Christian Chavez**

Service Project Manager

973-803-3898

christian.chavez@schindler.com



Schedule your free equipment evaluation today.\* Call, email, or use the QR code to take advantage of a special offer to get a **MONTH OF SERVICE FREE.\***

**Schindler Elevator Corporation**

[www.schindler.com](http://www.schindler.com) | [schindlerna](#) | [schindlerelevatorcorp](#) | [schindlerelevatorcorp](#)

\*New service customers only. Limited to the Richmond, Roanoke & Virginia Beach, VA area. Offer valid for a limited time only and may be withdrawn at any time without notice. No cash value. Limit 1 evaluation per building. Certain exclusions, restrictions, taxes, and other fees may apply. Call 202.302.1488 for complete details.



**We Elevate**

**Schindler**

From one of our valued annual Silver sponsors:



Trolley Hospitality Companies was founded with a vision to deliver quality food service options for all occasions. Our family of brands, distinct yet complimentary, aim to provide exceptional culinary experiences combined with customized solutions and personal service. From award-winning catering to corporate solutions, we are your source for all food and beverage needs.



**TROLLEY HOUSE  
REFRESHMENTS**

**Complete Workplace Food  
& Beverage Provider**



**Micro Markets**

Give employees the breakroom options they've always wanted. A micro market can boost employee productivity and satisfaction.



**TROLLEY EATS**

**Corporate Dining  
Services  
With An Emphasis On  
Superior Food, Service,  
And Long-Term  
Commercial Value**



**GOURMET GANG**

Gourmet Gang, a distinguished deli and drop-off catering service in coastal Virginia, boasts 27 years of culinary expertise. With seven conveniently located delis, they offer the community a wide range of fresh, flavorful meals crafted with care. Whether it's a quick bite or a drop-off catered gathering, Gourmet Gang consistently delivers quality and service that exceeds expectations across the region.

**Pantry Service**

Office and hotel pantry service. Fast turnaround, order by the case, over 1000 snacks, meals, ice cream, beverages, and more.



**Vending Service**

We provide a wide variety of beverage and snack options, including both local and national products.

**Coffee & Water**

Offering popular coffee brands, supplies, touchless, single-serve, espresso, high-volume, and specialty coffee brewers. New touchless flavored water machines, bottled water, water filtration, and more.



**Expert Catering is  
More Than Good Food**

Specializing in corporate events, private events, and weddings, Groovin' Gourmets promises exceptional service from the moment you pick up the phone. You can expect a polished, professional experience from our arrival at your event through to breakdown and cleanup. Our diverse menus are designed to satisfy even the most discriminating palates.



**Cafe**

Enjoy a premium coffee shop experience with a diverse selection of items. Whether for breakfast or a light snack, our menu accommodates to everyone within your organization.

**Dining**

Experience complete food service management systems designed for corporate dining. Our adaptable solutions cater to the unique needs of your business.



Trolley Hospitality Companies  
8501 Sanford Drive  
Richmond, VA 23228

[Trolleyhouseva.com](http://Trolleyhouseva.com)



From one of our valued annual Silver sponsors:



## SERVICE

With professionals that are backed by an international network of engineers and experts, we are here to give you a fast turnaround for your elevator service. Expect lowered downtime with personal support from highly experienced-certified technicians and a 24/7 call center to meet your needs.



## REPAIR

Ready to have prompt delivery for your spares and repairs? Don't wait around for parts to come in and get a higher availability thanks to quick troubleshooting. Our swift solutions are brought from local experts backed by a global network.



## MODERNIZATION

Meet changing code requirements on your aging equipment and give your passengers an upgraded interior to match your building's aesthetic. Our extensive product portfolio guarantees the best option for your elevators.



## CAPITAL PLANNING

Our capital planning offers you dedicated representatives who will provide you with the best recommendations for extending your elevator's lifespan. All consulting is customized for your building to see that your modernization fits your budget.

Contact the Richmond branch office at 1 804-355-9792

MOVE BEYOND