

THE PRESIDENT'S MESSAGE...



Dear IFMA RVA Members,

It is hard to believe that we are well into the new year. Just a few notes from 2025. November started off with an awesome tour of the newly renovated Kinsale Building. It was amazing to see how the building transformed into an incredible workspace for the Kinsale team. They also have plans to develop the entire property over the next decade to include a new parking deck, hotel and retail space. It will be fun to watch this project in the coming years. A big thank you to Raina Nitch and Kinsale for hosting us.

On November 13th, we had 27 volunteers donate their time to the Salvation Army Angel Tree at their facility at Stony Point Fashion Park. While it was early in their season, they had multiple projects for our team and kept us very busy for 3 hours. In all the local Angel Tree will provide Christmas assistance serve over 4,500 children and seniors experiencing financial hardship. Our time spent helps to ensure that these families receive the joy of Christmas. Thank you for your help and support.

I am also pleased to announce that we made a chapter made a donation to Beyond Boundaries again this year with proceeds from the annual Bud Vye Golf Tournament. Beyond Boundaries is a non-profit based in Richmond, Virginia specializing in guiding participants with disabilities, veterans, underserved youth, and recovery programs on outdoor adventures.

We postponed our Holiday Party due to inclement weather. It was held on January 13th at the beautiful Virginia War Memorial. The Holiday Party is always one of my favorite events of the year. The event was well attended and a lot of fun. Karaoke was a big hit and extremely entertaining.

On February 10th we will hold our next chapter meeting at Striker Park Home of the Richmond United Soccer Club. We look forward to seeing everyone there!

Happy New Year!
Michael

SPECIAL INVITATION FOR IFMA MEMBERS



Level up your career

**IFMA RVA is giving out scholarships for
Facility Managers to
complete certifications.**

Apply Now! Spots are limited!

www.ifmarichmond.org



IFMATM RVA
International Facility Management Association

Go to our website to apply:

www.ifmarichmond.org

Professional-Development

Become-a-CFM-FMP-or-SFP

HOLIDAY PARTY RECAP

On January 13th, The Richmond chapter of The International Facility Management Association, (IFMA) members and guests gathered at the historic Virginia War Memorial for a memorable Holiday Party that blended celebration, connection, and reflection. Set against the Memorial's striking architecture and sweeping views, the evening provided a meaningful backdrop for closing out the holiday season while looking ahead to a successful new year.

Attendees were welcomed into an elegant space that encouraged conversation and camaraderie.

From the moment guests arrived, the atmosphere was warm and festive, with colleagues reconnecting, new relationships forming, and industry partners sharing ideas. The venue's rich history added a special sense of purpose to the evening, reminding guests of the values of service and community that unite IFMA's mission.

The event featured lively DJ setting the tone, networking, seasonal refreshments, and thoughtful moments of appreciation. Members took time to celebrate the accomplishments of the past year, acknowledge the dedication of volunteers and partners, and express gratitude for the strength of the IFMA community. Laughter and conversation filled the room as guests enjoyed the opportunity to connect outside of their day-to-day roles.

Holding the Holiday Party at the Virginia War Memorial added depth to the celebration. The setting offered a chance for quiet reflection amid the festivities, reinforcing a shared commitment to leadership, professionalism, and giving back. It was a fitting location for an event focused on unity and forward momentum.

As the evening came to a close, attendees left with renewed energy and optimism for the year ahead. The January 13th Holiday Party was not only a celebration of the season, but also a reminder of the relationships and shared goals that make IFMA a strong and vibrant organization.







2026 PREPAID MEETING INVOICE

Pay now for every IFMA RVA meeting this year!

CERTIFIED (CFM, SFP, FMP) PROFESSIONAL MEMBER:
\$300 PROFESSIONAL OR ASSOCIATE MEMBER: \$360

NAME COMPANY _____

PHONE NUMBER _____

E-MAIL ADDRESS _____

Remittance by Check:

IFMA RICHMOND CHAPTER
ATTN: Paul Lamborn, IFMA
Treasurer P.O. Box 808
Richmond, VA 23218

Credit Card Online Payment:

Certified Members:

<https://checkout.square.site/buy/M3V3Q3T3IKGMNUNRF5JG7XND>

Non-Certified Members:

<https://checkout.square.site/buy/TDNVC5UQADVQC2NRWIF6M5VT>

PREPAID DUES ARE NON-TRANSFERABLE

MEMBERSHIP CORNER

Zach Parker -- Membership

NEW MEMBERS

Chris Dibble
Dominion Energy
chris.dibble@dominionenergy.com

Trent Dickson
BHE GT&S
trent.dickson@bhegts.com

Jason Bertsch
ABM
jason.bertsch@abm.com

Pete Sisti
Novanex, Inc.
ETE@NovanexSolutions.com

Ian Davis
FMX
ian.davis@gofmx.com

RENEWING MEMBERS

Connie Hom
Buckingham Greenery, Inc.
connie@buckinghamgreenery.com

Lauren Frazier
Grace & Holy Trinity Church
lfrazier@ghtc.org

Rod Hemphill
Redless/SCS Inc
rhemphill@redleescs.com



2024-25 Board of Directors

OFFICERS

President

Michael Calkins
michael@trolleyhouseva.com

Vice President

Raina Nitsch
raina.nitsch@kinsaleins.com

Secretary

Jessica Butterworth
jbutterworth@rangecommercial.com

Treasurer

Paul Lamborn
plamborn@techpainting.com.com

Immediate Past President

Brian Dudley, SFP, FMP
Brian.Dudley@Genworth.com

CHAPTER ADMINISTRATION

Administrator

Adam Larsen
Adam.Larsen@allegion.com

COMMITTEE CHAIRS

Membership

Zach Parker
ZParker@FandR.com

Programs

Daniel Furth
dfurth@odmva.com
and
Twila Tyler
ttyler@moii.com

Sponsorship

Brian Workman
BWorkman@MOII.com

Communications

Lynette Brinkerhoff
lynette.b@managemowed.com

Hospitality

Karen Clifton
kclifton@servproctn.com

Education

Matt Durden
matthew.durden@genworth.com

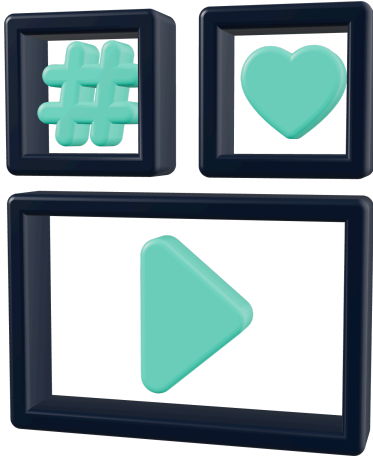
Golf Tournament

Chad Bishop
cbishop@svmsservices.net

Founding Member Advisor

Ranny Robertson, CFM, Retired
grrjr41@gmail.com

What's to come



NEW INTERACTIVE NEWSLETTER

Coming in 2026



MONTHLY MEETING SUMMARIES AND PHOTOS

See our LinkedIn Page for
a quicker look



EVENT DETAILS

When and Where...

WWW.IFMARICHMOND.ORG

If you'd like the opportunity to showcase your company during an event by becoming a meeting Bronze Sponsor, please reach out to:

**Brian Workman at
bworkman@moii.com**

Thank you to our 2025 / 2026 Annual Chapter Sponsors!

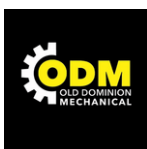
PLATINUM SPONSOR

*ServiceMASTER
Clean*

GOLD SPONSORS



SILVER SPONSORS





2026 BRONZE SPONSORSHIP FORM (MEMBERSHIP MEETING/CHAPTER EVENT SPONSORSHIP)

For \$400, the Sponsor Company will receive the following:

- Logo on Chapter website relative to meeting announcement
- Logo in Chapter newsletter (if received before deadline)
- Logo on meeting notice (if received before deadline)
- Logo displayed at meeting
- Two paid registrations to attend the meeting
- Marketing material displayed at meeting
- Opportunity to speak for 2 minutes at meeting

******* Please complete and return with company logo in a jpg file *******

Sponsor Information

corporate name: _____ **date:** _____

contact:_____ **for month/event:**_____

email:_____ **phone:**_____

Guest 1:_____ **Guest 2:**_____

Thank you for helping us empower facility management professionals in the Central Virginia! Please send company logo in adobe illustrator file (or image file if .ai not available) to Brian Workman, our Sponsorship Committee Chair, for publication. bworkman@moii.com



IFMA ANNUAL SPONSORSHIP FORM

SILVER:

- One Annual IFMA membership including dues
- No cost entry for one member to attend every meeting this year
- Golf tournament foursome sponsorship
- One meeting sponsorship in a month of your choosing
- One guest participant at the meeting you sponsor
- Logo on Chapter website, Chapter newsletter, Meeting notices

GOLD:

- All Silver benefits above plus the following
- Two guests for all sponsored meetings
- Three meeting sponsorships in the months of your choosing

PLATINUM:

- All Silver/Gold benefits above plus the following
- Two Annual IFMA memberships including dues
- Six meeting sponsorships in the months of your choosing

SILVER: \$2,300 GOLD: \$2,800 PLATINUM: \$3,400

Company Name: _____

Contact Name: _____

Contact Email Address: _____

Phone Number: _____

From our valued annual Platinum sponsor



AT SERVICEMASTER CLEAN THE EXPERIENCE MATTERS

At ServiceMaster Clean, we have the experience to service manufacturing facilities big and small, and with multiple locations. We work around your production schedules, production equipment, OEMs, warehousing, finished stock and high-tech controller equipment.

We can service your (front) office areas or the entire facility. Including cleaning outside the facility to handle needs such as removing crates, baling cardboard and other needs. We understand the importance of a clean facility to make a strong impression to your employees, clients and guests, and also to pass company inspections.

Our hard-surface floorcare services offer enhanced slip resistance, increasing safety for your employees and customers. We have state of the art products and equipment to fully clean all types of floors, including concrete, marble, vinyl, ceramic, quarry, tile, wood and more. Attractive, well-maintained floors can help enhance your professional image, while providing a clean, safe, work environment. We offer specialized products to handle unusual dirt or floorcare needs.

From one of our valued annual Gold sponsors:



Cleaning. Restoration. Construction.
Richmond • Chesterfield • Henrico • Tri-Cities, Plus



COMMERCIAL LARGE LOSS DIVISION

NO JOB IS TOO LARGE

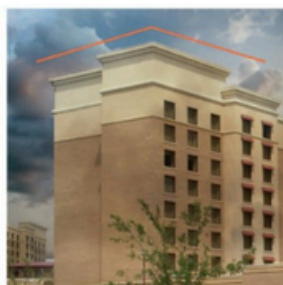
The SERVPRO® Commercial Large Loss Division is composed of our best of the best in restoration. Our elite large-loss specialists are prequalified and strategically positioned throughout the United States to handle any-size disaster. Every large loss is supervised by a commercial operations manager to help ensure seamless communication and timely mitigation.

The SERVPRO® Advantage is our ability to dispatch trained production professionals and cut costs through the strategic placement and oversight of temporary labor.

CLIENTS INCLUDE



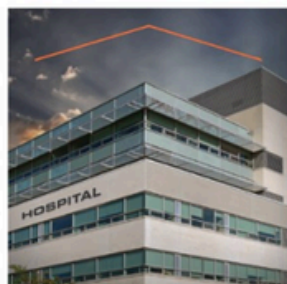
Property Management



Hospitality Facilities



Education Facilities



Healthcare Facilities



Food Service Facilities



Retail Facilities



SERVPRO® has the resources to help you immediately.



SERVPRO® performs the necessary work to reduce further damage.



SERVPRO® works with you and your carrier to develop and approve a recovery plan designed to reduce business interruption.

CALL US
TODAY

804-378-2323

OR VISIT OUR WEBSITE! SERVPROCHESTERFIELD.COM

MENTION
IFMA

From one of our valued annual Gold sponsors:



WT

WHITING-TURNER

proudly supports

INFdth

to advance our collective knowledge
value and growth for FM professionals

www.whiting-turner.com

Construction Management | General Contracting | Design-Build | Integrated Project Delivery

From one of our valued annual Silver sponsors:

ENVIRONMENTAL CONSULTING | GEOTECHNICAL ENGINEERING | CONSTRUCTION MATERIALS TESTING



**FROEHLING &
ROBERTSON**

**PROUD TO SERVE THE FACILITIES
MANAGEMENT MARKET**



From the air you breathe to the ground beneath your feet, F&R's results-oriented professional consulting engineers and environmental scientists are dedicated to protecting people and property.

F&R provides a range of valuable services to the facilities management industry that optimize building performance, reduce operating costs, and ensure regulatory compliance:



ENVIRONMENTAL CONSULTING

- Pre-Renovation Hazmat Inspections (Asbestos, Lead, PCBs)
- Mold Consulting
- Indoor Air Quality Testing
- Petroleum Underground Storage Tank Assessment
- Vapor Intrusion Testing
- Radon Testing



GEOTECHNICAL ENGINEERING

- Subgrade Evaluations
- Slope Stability Analysis
- Groundwater Assessments
- Forensic Investigation Support
- Expansion Consultation



CONSTRUCTION MATERIALS TESTING

- 3rd Party Special Inspections/ Code Compliance
- Document Condition of Existing Structures
- Preventive Maintenance Inspections
- Specialized Testing Services, such as Non-Destructive Testing (NDT)
- Forensic Materials Sampling & Testing

CONTACT US



Zachary C. Parker, PMP
Director of Environmental Services



804.591.2767



ZParker@FandR.com



www.fandr.com

From one of our valued annual Silver sponsors:



Worry-free pest
management is a
call away.



Ben Conaway
(240) 313-2612



We are excited
to offer our
customers
Anticimex SMART,
an intelligent
rodent control
system with
around-the-clock
monitoring and
support.



Benjamin Conaway
(202) 313-2612
ben.conaway@americanpest.net



MOSQUITOES



TICKS



ANTS



RODENTS



OVER 30 MORE



We Make Your Business Pest Proof

We know that pests in offices and in the workplace limit productivity and reduce profits. Scan QR code to learn more!

From one of our valued annual Silver sponsors:



MG | Commercial Services

MG Moving Services is an award-winning, full service moving and storage corporation with over a hundred moving professionals, a fleet of over thirty trucks, and two warehousing & distribution facilities available for use.

MG Moving Services provides office relocation, transportation, logistics & asset management services to facilities of all sizes, from small privately-held businesses to Fortune 500 companies and government locations, such as Fort Belvoir and Walter Reed Army Medical Center.

Locally-owned and headquartered in Sterling, Virginia, MG Moving Services is a highly recognized name, known and trusted for providing a wide scope of dependable relocation services throughout the DC Metro area. The company's extensively trained professionals, detailed processes & business systems have helped organizations complete over 100,000 successful relocations.



Project Management

- Project Planning & Design
- Move Management
- Office Decommissioning
- Modular Furniture Systems - Installation, Reconfiguration & Removal
- Furniture, Fixtures & Equipment (FF&E)



Commercial Services

- Office Moves - Internal, Local & Long Distance
- Moves, Adds & Changes (MAC)
- Commercial Storage
- Cubicle-Disassembly / Assembly
- Operating Supplies & Equipment (OS&E)



Technology Services

- IT Disconnect / Reconnect Services
- Server Relocations / Network 'Rack & Stack'
- Data Center Migrations
- Electronics Removal & Recycling
- Hard Drive Shredding / Data Destruction
- Cable Abatement & Removal



Warehousing / Logistics

- Receiving / Distribution
- Inventory Control
- Freight Forwarding & Management
- Record Retention & Archival Services
- Document Shredding



**Highly Professional.
Extraordinary Service.
Thousands of Successful
Moves. Minimize Business
Disruption with MG Moving
Services.**



Permits & Licenses

- ✓ Local for Hire Permit #4186
- ✓ Intrastate Certificate #614
- ✓ Interstate MC #848140
- ✓ USDOT #2455961



Credentials & Associations

- ✓ International Office Moving Institute (IOMI)
- ✓ American Trucking Associations (ATA)
- ✓ A-Rated Accredited BBB Member
- ✓ Claims Prevention & Procedure Council (CPPC)
- ✓ Virginia Movers & Warehousemen Association

From one of our valued annual Silver sponsors:



MOI partners with you to create intelligent spaces where people want to work, live, and stay.



1983

MOI WAS FOUNDED
75+

VIRGINIA-BASED
EMPLOYEE-OWNERS
MillerKnoll

TOP 3 DEALER IN THE
COUNTRY BY VOLUME

MOI is a client-centered interior solutions provider that furnishes any space from floor to ceiling. We partner with our clients to transform their environment and enhance their culture.

As a 100% employee-owned company, MOI's staff measures our success alongside the success of our clients' projects. This has resulted in 95% of clients recommending MOI as their interior solutions partner.

We partner with you from initial design vision to ordering product, delivery to installation, and move-in to post occupancy.



Connect with Brian Workman
Project Director in Richmond
bworkman@moii.com
www.moii.com

From one of our valued annual Silver sponsors:



Embrace the Shift

For more than 50 years, we have set the bar for clients who require consulting, construction, engineering and management services, combining science with the latest technology to devise solutions that stand the test of time. We break through barriers for our clients and help them follow through for sustainable results.

From one of our valued annual Silver sponsors:



The **Experts** Since 1987

All of your **needs** in one place.

With nearly 40 years of experience, Tech Painting delivers high-performance solutions for commercial and industrial spaces.

We ensure minimal disruption, lasting durability, and compliance with industry standards.

SOME OF OUR **EXPERTISE**

- Interior & Exterior Painting
- Drywall & Plaster Repair
- Wallcovering Installation & Removal
- Parking Lot Striping
- After Hours Services
- Wall Protection Installation
- Epoxy Floor Coatings
- Painted Graphics & Wayfinding



From office buildings to warehouses, our team enhances aesthetics, safety, and asset protection.



From one of our valued annual Silver sponsors:



Our Services:

- ✓ Carpet Tile
- ✓ Resilient Tile and Sheet
- ✓ Ceramic and Porcelain Tile
- ✓ Wood
- ✓ Fitness Flooring
- ✓ Epoxy and Sealed Concrete
- ✓ Healthcare Flooring / Containment
- ✓ Service Repairs and Maintenance

www.specifiedtile.com

Contact Us

 Josh Hodges  (804) 512-3385
 josh@specifiedtile.com

From one of our valued annual Silver sponsors:



ACI SERVICE

Uniquely Qualified for Your Business

ACI's factory trained technicians are uniquely qualified to keep all of your HVAC and plumbing equipment in top operating condition. **Backed by 60+ years of experience, our experts can customize your preventative maintenance plan to help lower costs and decrease downtime.**

In addition to providing 24/7 service, ACI Service can help you with:

- ▶ **Scheduled Quarterly Visits** to your site ensure continued efficiency. During these visits, we can perform the following and more:
Change filters | Change Belts | Clean Coils | Motor Optimization
- ▶ **Comprehensive Maintenance Plans** for all maintainable moving components including labor, materials and overtime. Some covered components include:
Compressors | Motors | Contactors | Relays | Bearings | Sheaves | Pulleys
- ▶ **Preventative Maintenance Plans** includes materials and labor cost for repairing worn or failed components. Examples of the equipment this can cover are:
Boilers | Chillers | Air Handlers | Exhaust Fans | Bearings | Split Systems
Large or Small roof-top units | Backflows | VFD's | Water Fountains

To learn more, or if you have questions about ACI services, contact us today!

service@acibuilds.com

804.233.7676

www.acibuilds.com

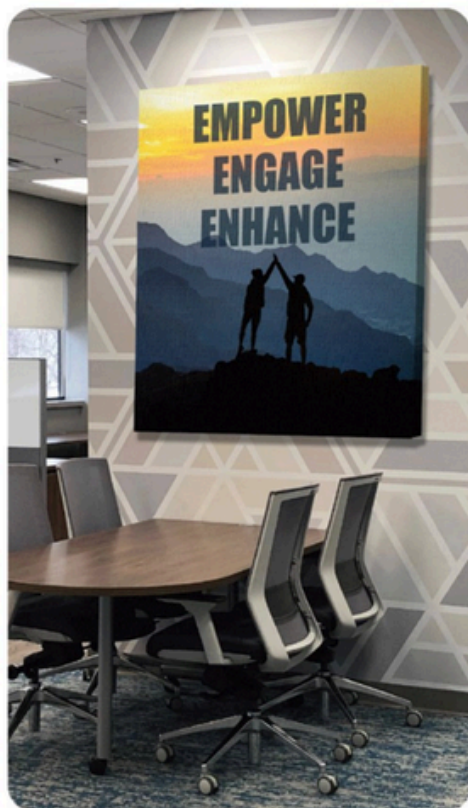
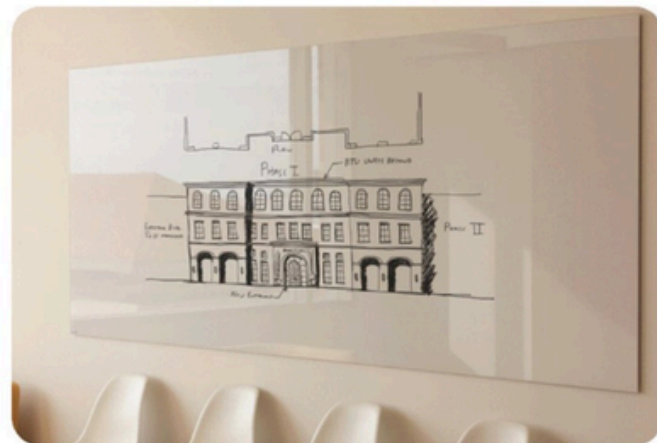
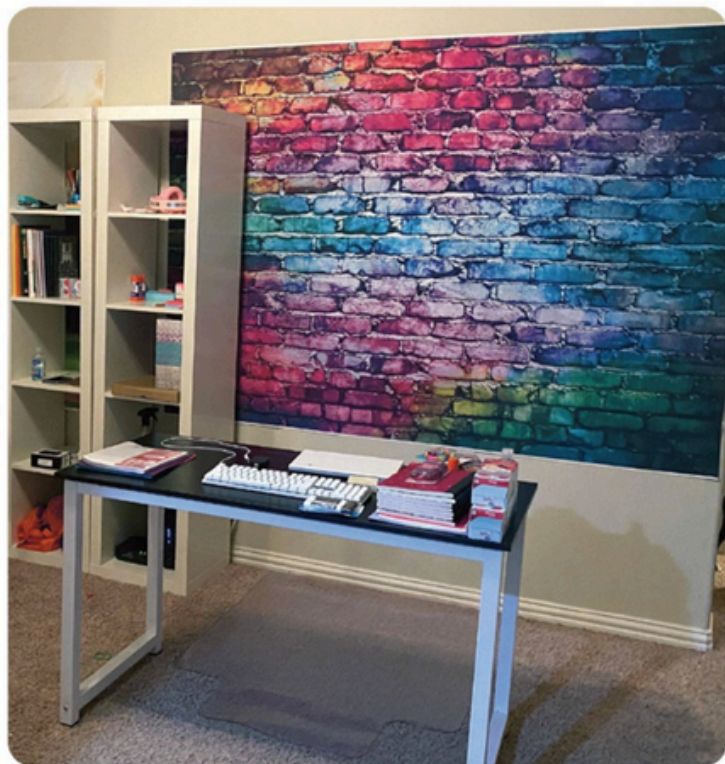


ACI
ATLANTIC CONSTRUCTORS

EXTRAORDINARY through Innovation, Collaboration, & Diversity

From one of our valued annual Silver sponsors:

Don't get out of your comfort zone,
simply upgrade it.



FAST SIGNS
More than fast. More than signs.™

West End/Richmond	804-270-7446	13@fastsigns.com
Southside/Richmond	804-272-7446	27@fastsigns.com
Downtown/Richmond	804-644-7446	49@fastsigns.com
Fredericksburg	540-548-0028	375@fastsigns.com

From one of our valued annual Silver sponsors:



We Elevate... Richmond, Roanoke & Virginia Beach

Special offers for IFMA members

Area leadership

James Bailey

General Manager

202-302-1488

james.bailey@schindler.com

Richmond & Roanoke, VA

Sabrina Qreitem

Service Sales Representative

804-258-0532

sabrina.qreitem@schindler.com

Virginia Beach, VA

Christian Chavez

Service Project Manager

973-803-3898

christian.chavez@schindler.com



Schedule your free equipment evaluation today.* Call, email, or use the QR code to take advantage of a special offer to get a **MONTH OF SERVICE FREE.***

Schindler Elevator Corporation

www.schindler.com | [schindlerna](#) | [schindlerelevatorcorp](#) | [schindlerelevatorcorp](#)

*New service customers only. Limited to the Richmond, Roanoke & Virginia Beach, VA area. Offer valid for a limited time only and may be withdrawn at any time without notice. No cash value. Limit 1 evaluation per building. Certain exclusions, restrictions, taxes, and other fees may apply. Call 202.302.1488 for complete details.



We Elevate

Schindler

From one of our valued annual Silver sponsors:



Trolley Hospitality Companies was founded with a vision to deliver quality food service options for all occasions. Our family of brands, distinct yet complimentary, aim to provide exceptional culinary experiences combined with customized solutions and personal service. From award-winning catering to corporate solutions, we are your source for all food and beverage needs.



**TROLLEY HOUSE
REFRESHMENTS**

**Complete Workplace Food
& Beverage Provider**



Micro Markets

Give employees the breakroom options they've always wanted. A micro market can boost employee productivity and satisfaction.



TROLLEY EATS

**Corporate Dining
Services
With An Emphasis On
Superior Food, Service,
And Long-Term
Commercial Value**



GOURMET GANG

Gourmet Gang, a distinguished deli and drop-off catering service in coastal Virginia, boasts 27 years of culinary expertise. With seven conveniently located delis, they offer the community a wide range of fresh, flavorful meals crafted with care. Whether it's a quick bite or a drop-off catered gathering, Gourmet Gang consistently delivers quality and service that exceeds expectations across the region.

Pantry Service

Office and hotel pantry service. Fast turnaround, order by the each, over 1000 snacks, meals, ice cream, beverages, and more.



Vending Service

We provide a wide variety of beverage and snack options, including both local and national products.

Coffee & Water

Offering popular coffee brands, supplies, touchless, single-serve, espresso, high-volume, and specialty coffee brewers. New touchless flavored water machines, bottled water, water filtration, and more.



**Expert Catering is
More Than Good Food**

Specializing in corporate events, private events, and weddings, Groovin' Gourmets promises exceptional service from the moment you pick up the phone. You can expect a polished, professional experience from our arrival at your event through to breakdown and cleanup. Our diverse menus are designed to satisfy even the most discriminating palates.



Cafe

Enjoy a premium coffee shop experience with a diverse selection of items. Whether for breakfast or a light snack, our menu accommodates to everyone within your organization.

Dining

Experience complete food service management systems designed for corporate dining. Our adaptable solutions cater to the unique needs of your business.



Trolley Hospitality Companies
8501 Sanford Drive
Richmond, VA 23228

Trolleyhouseva.com

From one of our valued annual Silver sponsors:



SERVICE

With professionals that are backed by an international network of engineers and experts, we are here to give you a fast turnaround for your elevator service. Expect lowered downtime with personal support from highly experienced-certified technicians and a 24/7 call center to meet your needs.



REPAIR

Ready to have prompt delivery for your spares and repairs? Don't wait around for parts to come in and get a higher availability thanks to quick troubleshooting. Our swift solutions are brought from local experts backed by a global network.



MODERNIZATION

Meet changing code requirements on your aging equipment and give your passengers an upgraded interior to match your building's aesthetic. Our extensive product portfolio guarantees the best option for your elevators.



CAPITAL PLANNING

Our capital planning offers you dedicated representatives who will provide you with the best recommendations for extending your elevator's lifespan. All consulting is customized for your building to see that your modernization fits your budget.

Contact the Richmond branch office at 1 804-355-9792

MOVE BEYOND