



## THE PRESIDENT'S MESSAGE...



Dear IFMA RVA Members,

On May 12, we had the pleasure of touring the Lewis Ginter Butterfly Conservatory. More than 40 members attended, and many joined us afterward for a lively happy hour at the Lakeside Tavern complete with karaoke. It was a wonderful evening, and I would like to thank the team at Lewis Ginter for hosting us once again.

I am pleased to share that our new board has been officially elected for the 2026–2027 term and will be formally inducted at our next chapter meeting. Please join me in congratulating Raina Nitsch, President; Jessica Butterworth, Vice President; Kevin Cohrs, Secretary; and Paul Lamborn, Treasurer. This outstanding group has an exciting year ahead, with a strong focus on new initiatives and member engagement.

It has been a true honor to serve as President of the Richmond Chapter alongside such an exceptional board. Together, we have accomplished a great deal this year. I am especially proud that we brought back in-person Lunch and Learn programs and successfully hosted three events. We also reinstated volunteer service days, with two meaningful opportunities at the ToolBank and the Salvation Army Angel Tree. In addition, through careful financial stewardship, we were able to budget for five scholarships to support facility managers pursuing their CFM, SFP, and FMP credentials. I am pleased to recognize this year's scholarship recipients: Josh Nuckols of Range Commercial, Jeff Delander of UNOS, Rashad Towns of Virginia Union University, Liz Gonzalez of VCU, and Evan Adkins of QTS Data Centers. Congratulations to all of our winners on this well-deserved achievement. We were also proud to make another cash donation to Beyond Boundaries following the success of our September golf tournament, another reflection of what our chapter can accomplish together.

Thank you for your support, your engagement, and the energy you bring to IFMA RVA. I look forward to seeing you at our June chapter meeting.

Best regards,  
Michael

## MAY MEETING RECAP

Our May meeting was one to remember as we had the opportunity to visit Lewis Ginter Botanical Gardens and explore the iconic and newly expanded conservatory.

We toured the butterfly gardens and the 13 national plant collections on display and learned about the unique challenges involved with creating and maintaining a suitable environment. We also learned about the state-of-the-art greenhouse controls and modern infrastructure involved with the project.

We voted on our new board members for 2026-2027. The new members are announced below and will be inducted during June's membership meeting next month.

After touring and voting, we were ready to enjoy a lively happy hour complete with networking, revelry, and even a little karaoke.

Looking forward to the next event!



# MAY MEETING RECAP





## JUNE MEMBERSHIP MEETING

**WHEN:** June 30<sup>th</sup>, 5:30 pm

**LOCATION:** River City Roll, 939 Myers St, Richmond, VA 23230



### Join us for an unforgettable networking night at River City Roll

If you're looking to grow your professional circle, reconnect with peers, or just step away from your routine, this event offers the perfect midweek change of pace. We will be inducting our board members while engaging in a little friendly competition. Enjoy great food, drinks, and conversation alongside a group of driven professionals in a setting designed to make mingling easy and comfortable. River City Roll provides a fresh alternative to traditional networking, creating space for genuine interactions without the pressure of a formal environment. Take advantage of the opportunity to connect, share ideas, and build relationships that extend beyond the event. Come on your own or bring a colleague—you'll leave with new contacts, new perspectives, and a stronger sense of community.

**Time:** 5:30pm-7:30pm

**RSVP by:** Tuesday, June 23rd. Registrations are recommended, may pay at the door.

RSVP at [ifmarva.com](http://ifmarva.com) through the events tab or on the main page

**Cost\*:**  
Certified Members: \$20  
Members: \$30  
Non-Members: \$60

\*Registrations are encouraged prior to event.  
\*Credit card payments accepted at the door

Questions? Contact [ifmarichva@gmail.com](mailto:ifmarichva@gmail.com)

### Thank you to our 2026 Annual Chapter Sponsors!





**IFMA**<sup>®</sup> Richmond  
Chapter  
International Facility Management Association



IFMA RVA's Annual Golf Tournament Returns!

Monday, September 28<sup>th</sup> 2026

Meadowbrook Country Club

3700 Cogbill Rd

N.Chesterfield, VA 23234





# 2026 Board Update

Voting for 2026-2027 board members will take place at our membership meeting at Lewis Ginter Botanical Garden on May 12<sup>th</sup>.  
The nominees are:

President: Raina Nitsch

Vice President: Jessica Butterworth

Secretary: Kevin Cohrs

Treasurer: Paul Lamborn

Past President: Michael Calkins





**IFMA<sup>®</sup> Richmond Chapter**  
International Facility Management Association

## 2026 PREPAID MEETING INVOICE

***Pay now for every IFMA RVA meeting this year!***

CERTIFIED (CFM, SFP, FMP) PROFESSIONAL MEMBER: \$300  
PROFESSIONAL OR ASSOCIATE MEMBER: \$360

NAME COMPANY \_\_\_\_\_

PHONE NUMBER \_\_\_\_\_

E-MAIL ADDRESS \_\_\_\_\_

### Remittance by Check:

IFMA RICHMOND CHAPTER  
ATTN: Paul Lamborn, IFMA  
Treasurer P.O. Box 808  
Richmond, VA 23218

### Credit Card Online Payment:

Certified Members:

<https://checkout.square.site/buy/M3V3Q3T3IKGMNUNRF5JG7XND>

Non-Certified Members:

<https://checkout.square.site/buy/TDNVC5UQADVQC2NRWIF6M5VT>

\*PREPAID DUES ARE NON-TRANSFERABLE\*

# MEMBERSHIP CORNER

Zach Parker -- Membership

## NEW MEMBERS

Cindi Pappas  
Integrity Landscaping Solutions  
[cpappas@integritylandscapingva.com](mailto:cpappas@integritylandscapingva.com)

Michael Prettyman  
CJ Maintenance  
[mprettyman@cjmaint.com](mailto:mprettyman@cjmaint.com)

Glenn Deetman  
Fitness Machine Technicians  
[gdeetman@fitnessmachinetechnicians.com](mailto:gdeetman@fitnessmachinetechnicians.com)

Kricia Rivera  
Hanley Energy  
[kricia.rivera@hanleyenergy.com](mailto:kricia.rivera@hanleyenergy.com)

Rashad Towns  
Virginia Union University  
[rashad.towns@gmail.com](mailto:rashad.towns@gmail.com)

Nick Early  
Evergreen Christian School  
[nearly@ecsloudoun.com](mailto:nearly@ecsloudoun.com)

Edward Grim  
[cmdgrim@aol.com](mailto:cmdgrim@aol.com)

Tom Rockwell  
Division 9 Associates  
[tom@division9associates.com](mailto:tom@division9associates.com)

## RENEWING MEMBERS

Reginald Coleman  
Federal Reserve Bank of Richmond  
[reginald.coleman@rich.frb.org](mailto:reginald.coleman@rich.frb.org)

Jeff Dalander  
UNOS  
[jeff.dalander@unos.org](mailto:jeff.dalander@unos.org)

Paul Lamborn  
Tech Painting Co.  
[plamborn@techpainting.com](mailto:plamborn@techpainting.com)

Troy Robertson  
Genworth  
[troy.robertson@genworth.com](mailto:troy.robertson@genworth.com)

Jeffrey Godfrey  
VA Department of Transportation  
[jeffrey.godfrey@vdot.virginia.gov](mailto:jeffrey.godfrey@vdot.virginia.gov)

Don Leftwich  
Goochland County Virginia  
[dleftwich@goochlandva.us](mailto:dleftwich@goochlandva.us)

Raina Nitsch  
Kinsale Insurance Company  
[raina.nitsch@kinsaleins.com](mailto:raina.nitsch@kinsaleins.com)

Lisa Hall  
Dunbar Security  
[lhall@dunbarsecurity.com](mailto:lhall@dunbarsecurity.com)

## 2025-2026 Board of Directors

### OFFICERS

#### President

Michael Calkins  
[michael@trolleyhouseva.com](mailto:michael@trolleyhouseva.com)

#### Vice President

Raina Nitsch  
[raina.nitsch@kinsaleins.com](mailto:raina.nitsch@kinsaleins.com)

#### Secretary

Jessica Butterworth  
[jbutterworth@rangecommercial.com](mailto:jbutterworth@rangecommercial.com)

#### Treasurer

Paul Lamborn  
[plamborn@techpainting.com](mailto:plamborn@techpainting.com)

#### Immediate Past President

Brian Dudley, SFP, FMP  
[Brian.Dudley@Genworth.com](mailto:Brian.Dudley@Genworth.com)

### CHAPTER ADMINISTRATION

#### Administrator

Adam Larsen  
[Adam.Larsen@allegion.com](mailto:Adam.Larsen@allegion.com)

### COMMITTEE CHAIRS

#### Membership

Zach Parker  
[ZParker@FandR.com](mailto:ZParker@FandR.com)

#### Programs

Daniel Furth  
[dfurth@odmva.com](mailto:dfurth@odmva.com)  
and  
Twila Tyler  
[tyler@creative-va.com](mailto:tyler@creative-va.com)

#### Sponsorship

Brian Workman  
[BWorkman@MOII.com](mailto:BWorkman@MOII.com)

#### Communications

Ben Conaway  
[ben.conaway@americanpest.net](mailto:ben.conaway@americanpest.net)

#### Hospitality

Cory Barns  
[cory@edswp.com](mailto:cory@edswp.com)

#### Education

Matt Durden  
[matthew.durden@genworth.com](mailto:matthew.durden@genworth.com)

#### Golf Tournament

Chad Bishop  
[cbishop@svmsservices.net](mailto:cbishop@svmsservices.net)

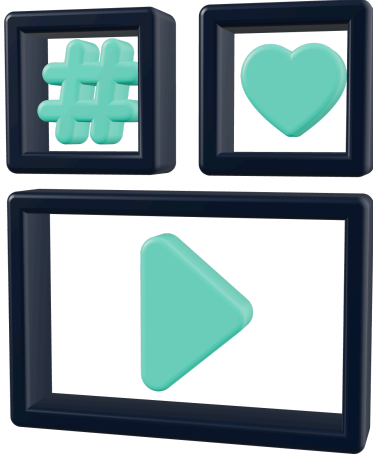
#### Founding Member Advisor

Ranny Robertson, CFM, Retired  
[grrjr41@gmail.com](mailto:grrjr41@gmail.com)



**IFMA**® Richmond  
Chapter  
International Facility Management Association

# What's to come



**NEW INTERACTIVE NEWSLETTER**

**Coming in 2026**



**MONTHLY MEETING SUMMARIES  
AND PHOTOS**

**See our LinkedIn Page for  
a quicker look**



**EVENT DETAILS**

**When and Where...**

**[WWW.IFMARICHMOND.ORG](http://WWW.IFMARICHMOND.ORG)**

---

If you'd like the opportunity to showcase your company during an event by becoming a meeting Bronze Sponsor, please reach out to:

Brian Workman at  
[bworkman@moii.com](mailto:bworkman@moii.com)

---

*Thank you to our 2025 / 2026 Annual Chapter Sponsors!*

PLATINUM SPONSOR



GOLD SPONSORS



SILVER SPONSORS





## 2026 BRONZE SPONSORSHIP FORM (MEMBERSHIP MEETING/CHAPTER EVENT SPONSORSHIP)

**For \$400, the Sponsor Company will receive the following:**

- Logo on Chapter website relative to meeting announcement
- Logo in Chapter newsletter (if received before deadline)
- Logo on meeting notice (if received before deadline)
- Logo displayed at meeting
- Two paid registrations to attend the meeting
- Marketing material displayed at meeting
- Opportunity to speak for 2 minutes at meeting

**\*\*\*\*\* Please complete and return with company logo in a jpg file \*\*\*\*\***

### **Sponsor Information**

**corporate name:** \_\_\_\_\_ **date:** \_\_\_\_\_

**contact:**\_\_\_\_\_ **for month/event:**\_\_\_\_\_

**email:**\_\_\_\_\_ **phone:**\_\_\_\_\_

**Guest 1:**\_\_\_\_\_ **Guest 2:**\_\_\_\_\_

Thank you for helping us empower facility management professionals in the Central Virginia! Please send company logo in adobe illustrator file (or image file if .ai not available) to Brian Workman, our Sponsorship Committee Chair, for publication. [bworkman@moii.com](mailto:bworkman@moii.com)



## **IFMA ANNUAL SPONSORSHIP FORM**

### **SILVER:**

- **One Annual IFMA membership including dues**
- **No cost entry for one member to attend every meeting this year**
- **Golf tournament foursome sponsorship**
- **One meeting sponsorship in a month of your choosing**
- **One guest participant at the meeting you sponsor**
- **Logo on Chapter website, Chapter newsletter, Meeting notices**

### **GOLD:**

- **All Silver benefits above plus the following**
- **Two guests for all sponsored meetings**
- **Three meeting sponsorships in the months of your choosing**

### **PLATINUM:**

- **All Silver/Gold benefits above plus the following**
- **Two Annual IFMA memberships including dues**
- **Six meeting sponsorships in the months of your choosing**

**SILVER: \$2,300 GOLD: \$2,800 PLATINUM: \$3,400**

**Company Name:** \_\_\_\_\_

**Contact Name:** \_\_\_\_\_

**Contact Email Address:** \_\_\_\_\_

**Phone Number:** \_\_\_\_\_

From one of our valued annual Platinum sponsors:



## AT SERVICEMASTER CLEAN THE EXPERIENCE MATTERS

At ServiceMaster Clean, we have the experience to service manufacturing facilities big and small, and with multiple locations. We work around your production schedules, production equipment, OEMs, warehousing, finished stock and high-tech controller equipment.

We can service your (front) office areas or the entire facility. Including cleaning outside the facility to handle needs such as removing crates, baling cardboard and other needs. We understand the importance of a clean facility to make a strong impression to your employees, clients and guests, and also to pass company inspections.

Our hard-surface floorcare services offer enhanced slip resistance, increasing safety for your employees and customers. We have state of the art products and equipment to fully clean all types of floors, including concrete, marble, vinyl, ceramic, quarry, tile, wood and more. Attractive, well-maintained floors can help enhance your professional image, while providing a clean, safe, work environment. We offer specialized products to handle unusual dirt or floorcare needs.

---

From one of our valued annual Platinum sponsors:



Cleaning. Restoration. Construction.  
Richmond • Chesterfield • Henrico • Tri-Cities, Plus



# COMMERCIAL LARGE LOSS DIVISION

NO JOB IS TOO LARGE

The SERVPRO® Commercial Large Loss Division is composed of our best of the best in restoration. Our elite large-loss specialists are prequalified and strategically positioned throughout the United States to handle any-size disaster. Every large loss is supervised by a commercial operations manager to help ensure seamless communication and timely mitigation.

The SERVPRO® Advantage is our ability to dispatch trained production professionals and cut costs through the strategic placement and oversight of temporary labor.

## CLIENTS INCLUDE



Property Management



Hospitality Facilities



Education Facilities



Healthcare Facilities



Food Service Facilities



Retail Facilities



SERVPRO® has the resources to help you immediately.



SERVPRO® performs the necessary work to reduce further damage.



SERVPRO® works with you and your carrier to develop and approve a recovery plan designed to reduce business interruption.

CALL US  
TODAY

**804-378-2323**

MENTION  
IFMA

OR VISIT OUR WEBSITE! [SERVPROCHESTERFIELD.COM](http://SERVPROCHESTERFIELD.COM)

From one of our valued annual Gold sponsors:



The **Experts** Since 1987

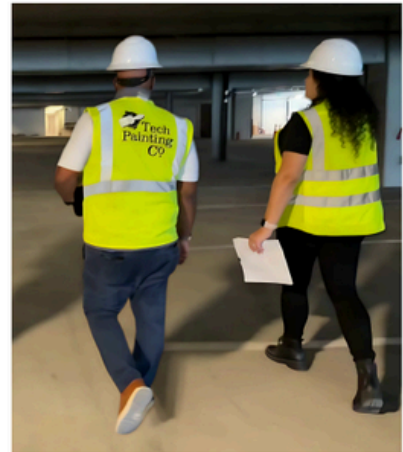
## All of your **needs** in one place.

With nearly 40 years of experience, Tech Painting delivers high-performance solutions for commercial and industrial spaces.

We ensure minimal disruption, lasting durability, and compliance with industry standards.

### SOME OF OUR **EXPERTISE**

- Interior & Exterior Painting
- Drywall & Plaster Repair
- Wallcovering Installation & Removal
- Parking Lot Striping
- After Hours Services
- Wall Protection Installation
- Epoxy Floor Coatings
- Painted Graphics & Wayfinding

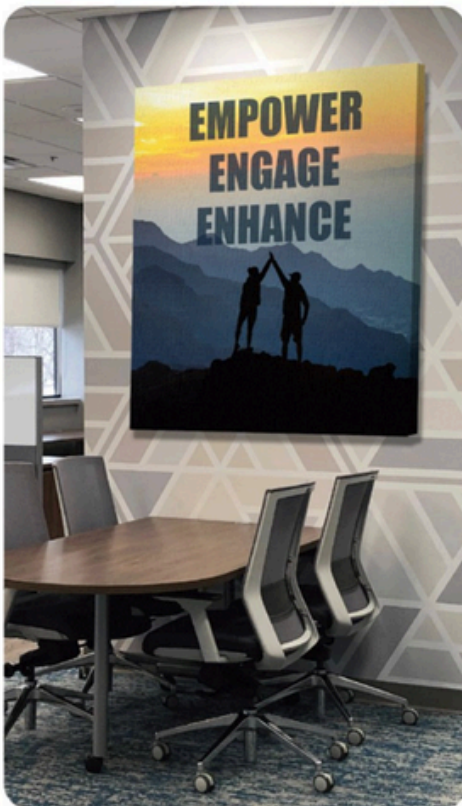
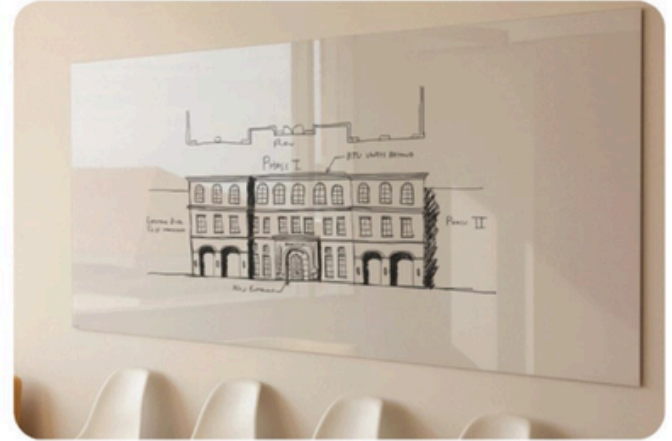


From office buildings to warehouses, our team enhances aesthetics, safety, and asset protection.



From one of our valued annual Gold sponsors:

Don't get out of your comfort zone,  
simply upgrade it.



**FASTSIGNS**  
More than fast. More than signs.™

West End/Richmond	804-270-7446	13@fastsigns.com
Southside/Richmond	804-272-7446	27@fastsigns.com
Downtown/Richmond	804-644-7446	49@fastsigns.com
Fredericksburg	540-548-0028	375@fastsigns.com

# HELPING YOU REACH THE PEAK OF YOUR REAL ESTATE POTENTIAL



Decades of nationwide commercial real estate experience have taught us that happy, smart, empowered people provide exceptional service. We're a team of experts uniquely committed to client success, rewarding relationships, and positive culture. Based in Richmond, VA, we are independently owned and operated, which means we answer only to clients and employees, not to shareholders.

Let's Get in Touch.

## Services Include

---

- Property Management
- Agency Sales & Leasing
- Occupier Representation
- Building Engineering
- Lease Administration
- Project Management
- Accounting
- Research



[info@rangecommercial.com](mailto:info@rangecommercial.com)  
(804) 796-0500 | [rangecommercial.com](http://rangecommercial.com)  
7200 Glen Forest Drive, Suite 100  
Richmond, VA 23226



From one of our valued annual Silver sponsors:



**WT**  
WHITING-TURNER

proudly supports

**INFdth**

to advance our collective **knowledge**  
**value** and **growth** for FM professionals

[www.whiting-turner.com](http://www.whiting-turner.com)

Construction Management | General Contracting | Design-Build | Integrated Project Delivery

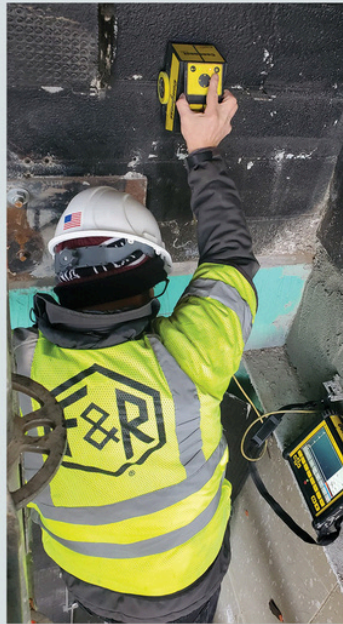
# From one of our valued annual Silver sponsors:

ENVIRONMENTAL CONSULTING | GEOTECHNICAL ENGINEERING | CONSTRUCTION MATERIALS TESTING



FROEHLING &  
ROBERTSON

PROUD TO SERVE THE FACILITIES  
MANAGEMENT MARKET



From the air you breathe to the ground beneath your feet, F&R's results-oriented professional consulting engineers and environmental scientists are dedicated to protecting people and property.

F&R provides a range of valuable services to the facilities management industry that optimize building performance, reduce operating costs, and ensure regulatory compliance:



## ENVIRONMENTAL CONSULTING

- Pre-Renovation Hazmat Inspections (Asbestos, Lead, PCBs)
- Mold Consulting
- Indoor Air Quality Testing
- Petroleum Underground Storage Tank Assessment
- Vapor Intrusion Testing
- Radon Testing



## GEOTECHNICAL ENGINEERING

- Subgrade Evaluations
- Slope Stability Analysis
- Groundwater Assessments
- Forensic Investigation Support
- Expansion Consultation



## CONSTRUCTION MATERIALS TESTING

- 3rd Party Special Inspections/ Code Compliance
- Document Condition of Existing Structures
- Preventive Maintenance Inspections
- Specialized Testing Services, such as Non-Destructive Testing (NDT)
- Forensic Materials Sampling & Testing

## CONTACT US



Zachary C. Parker, PMP  
Director of Environmental Services



804.591.2767



ZParker@FandR.com



www.fandr.com

From one of our valued annual Silver sponsors:



# MG | Commercial Services

MG Moving Services is an award-winning, full service moving and storage corporation with over a hundred moving professionals, a fleet of over thirty trucks, and two warehousing & distribution facilities available for use.

MG Moving Services provides office relocation, transportation, logistics & asset management services to facilities of all sizes, from small privately-held businesses to Fortune 500 companies and government locations, such as Fort Belvoir and Walter Reed Army Medical Center.

Locally-owned and headquartered in Sterling, Virginia, MG Moving Services is a highly recognized name, known and trusted for providing a wide scope of dependable relocation services throughout the DC Metro area. The company's extensively trained professionals, detailed processes & business systems have helped organizations complete over 100,000 successful relocations.



## Project Management

- Project Planning & Design
- Move Management
- Office Decommissioning
- Modular Furniture Systems - Installation, Reconfiguration & Removal
- Furniture, Fixtures & Equipment (FF&E)



## Commercial Services

- Office Moves - Internal, Local & Long Distance
- Moves, Adds & Changes (MAC)
- Commercial Storage
- Cubicle-Disassembly / Assembly
- Operating Supplies & Equipment (OS&E)



## Technology Services

- IT Disconnect / Reconnect Services
- Server Relocations / Network 'Rack & Stack'
- Data Center Migrations
- Electronics Removal & Recycling
- Hard Drive Shredding / Data Destruction
- Cable Abatement & Removal



## Warehousing / Logistics

- Receiving / Distribution
- Inventory Control
- Freight Forwarding & Management
- Record Retention & Archival Services
- Document Shredding



**Highly Professional. Extraordinary Service. Thousands of Successful Moves. Minimize Business Disruption with MG Moving Services.**



## Permits & Licenses

- ✓ Local for Hire Permit #4186
- ✓ Intrastate Certificate #614
- ✓ Interstate MC #848140
- ✓ USDOT #2455961



## Credentials & Associations

- ✓ International Office Moving Institute (IOMI)
- ✓ American Trucking Associations (ATA)
- ✓ A-Rated Accredited BBB Member
- ✓ Claims Prevention & Procedure Council (CPPC)
- ✓ Virginia Movers & Warehousemen Association

From one of our valued annual Silver sponsors:



MOI partners with you to create intelligent spaces where people want to work, live, and stay.



1983

MOI WAS FOUNDED

75+

VIRGINIA-BASED  
EMPLOYEE-OWNERS

**MillerKnoll**

TOP 3 DEALER IN THE  
COUNTRY BY VOLUME

MOI is a client-centered interior solutions provider that furnishes any space from floor to ceiling. We partner with our clients to transform their environment and enhance their culture.

As a 100% employee-owned company, MOI's staff measures our success alongside the success of our clients' projects. This has resulted in 95% of clients recommending MOI as their interior solutions partner.

We partner with you from initial design vision to ordering product, delivery to installation, and move-in to post occupancy.



Connect with Brian Workman  
Project Director in Richmond  
[bworkman@moii.com](mailto:bworkman@moii.com)  
[www.moii.com](http://www.moii.com)

From one of our valued annual Silver sponsors:



# Embrace the Shift

---

For more than 50 years, we have set the bar for clients who require consulting, construction, engineering and management services, combining science with the latest technology to devise solutions that stand the test of time. We break through barriers for our clients and help them follow through for sustainable results.

From one of our valued annual Silver sponsors:



## Our Services:

- ✓ Carpet Tile
- ✓ Resilient Tile and Sheet
- ✓ Ceramic and Porcelain Tile
- ✓ Wood
- ✓ Fitness Flooring
- ✓ Epoxy and Sealed Concrete
- ✓ Healthcare Flooring / Containment
- ✓ Service Repairs and Maintenance

[www.specifiedtile.com](http://www.specifiedtile.com)

**Contact Us**

 Josh Hodges  (804) 512-3385

 [josh@specifiedtile.com](mailto:josh@specifiedtile.com)

From one of our valued annual Silver sponsors:



# ACI SERVICE

Uniquely Qualified for Your Business

ACI's factory trained technicians are uniquely qualified to keep all of your HVAC and plumbing equipment in top operating condition. **Backed by 60+ years of experience, our experts can customize your preventative maintenance plan to help lower costs and decrease downtime.**

**In addition to providing 24/7 service, ACI Service can help you with:**

- ▶ **Scheduled Quarterly Visits** to your site ensure continued efficiency. During these visits, we can perform the following and more:  
**Change filters | Change Belts | Clean Coils | Motor Optimization**
- ▶ **Comprehensive Maintenance Plans** for all maintainable moving components including labor, materials and overtime. Some covered components include:  
**Compressors | Motors | Contactors | Relays | Bearings | Sheaves | Pulleys**
- ▶ **Preventative Maintenance Plans** includes materials and labor cost for repairing worn or failed components. Examples of the equipment this can cover are:  
**Boilers | Chillers | Air Handlers | Exhaust Fans | Bearings | Split Systems  
Large or Small roof-top units | Backflows | VFD's | Water Fountains**

To learn more, or if you have questions about ACI services, contact us today!

[service@acibuilds.com](mailto:service@acibuilds.com)

804.233.7676

[www.acibuilds.com](http://www.acibuilds.com)



**ACI**  
ATLANTIC CONSTRUCTORS

EXTRAORDINARY through Innovation, Collaboration, & Diversity

From one of our valued annual Silver sponsors:

# TROLLEY HOSPITALITY COMPANIES

Trolley Hospitality Companies was founded with a vision to deliver quality food service options for all occasions. Our family of brands, distinct yet complimentary, aim to provide exceptional culinary experiences combined with customized solutions and personal service. From award-winning catering to corporate solutions, we are your source for all food and beverage needs.



**TROLLEY HOUSE  
REFRESHMENTS**

**Complete Workplace Food  
& Beverage Provider**



**Micro Markets**

Give employees the breakroom options they've always wanted. A micro market can boost employee productivity and satisfaction.

**Pantry Service**

Office and hotel pantry service. Fast turnaround, order by the each, over 1000 snacks, meals, ice cream, beverages, and more.



**Vending Service**

We provide a wide variety of beverage and snack options, including both local and national products.

**Coffee & Water**

Offering popular coffee brands, supplies, touchless, single-serve, espresso, high-volume, and specialty coffee brewers. New touchless flavored water machines, bottled water, water filtration, and more.



**TROLLEY EATS**

**Corporate Dining  
Services  
With An Emphasis On  
Superior Food, Service,  
And Long-Term  
Commercial Value**



**Expert Catering is  
More Than Good Food**

Specializing in corporate events, private events, and weddings, Groovin' Gourmets promises exceptional service from the moment you pick up the phone. You can expect a polished, professional experience from our arrival at your event through to breakdown and cleanup. Our diverse menus are designed to satisfy even the most discriminating palates.



**Cafe**

Enjoy a premium coffee shop experience with a diverse selection of items. Whether for breakfast or a light snack, our menu accommodates to everyone within your organization.

**Dining**

Experience complete food service management systems designed for corporate dining. Our adaptable solutions cater to the unique needs of your business.



**GOURMET GANG**

Gourmet Gang, a distinguished deli and drop-off catering service in coastal Virginia, boasts 27 years of culinary expertise. With seven conveniently located delis, they offer the community a wide range of fresh, flavorful meals crafted with care. Whether it's a quick bite or a drop-off catered gathering, Gourmet Gang consistently delivers quality and service that exceeds expectations across the region.



Trolley Hospitality Companies  
8501 Sanford Drive  
Richmond, VA 23228

[Trolleyhouseva.com](http://Trolleyhouseva.com)

From one of our valued annual Silver sponsors:



## SERVICE

With professionals that are backed by an international network of engineers and experts, we are here to give you a fast turnaround for your elevator service. Expect lowered downtime with personal support from highly experienced-certified technicians and a 24/7 call center to meet your needs.



## REPAIR

Ready to have prompt delivery for your spares and repairs? Don't wait around for parts to come in and get a higher availability thanks to quick troubleshooting. Our swift solutions are brought from local experts backed by a global network.



## MODERNIZATION

Meet changing code requirements on your aging equipment and give your passengers an upgraded interior to match your building's aesthetic. Our extensive product portfolio guarantees the best option for your elevators.



## CAPITAL PLANNING

Our capital planning offers you dedicated representatives who will provide you with the best recommendations for extending your elevator's lifespan. All consulting is customized for your building to see that your modernization fits your budget.

Contact the Richmond branch office at 1 804-355-9792

MOVE BEYOND